

# Incandescent lighting

- 
- 120–123 DuraMax Lamps
  - 124 Natural Light Lamps
  - 125–141 Incandescent Lamps (By Wattage)
  - 141 Lamps Listed by Lumens
  - 141 Special Lighting
  - 141 Street Lighting Lamps
  - 142–143 Decorative Lamps (Blister-Carded)
  - 144–145 Decorative Lamps (Boxed and Others)
  - 146–147 TuffGuard Incandescent Coated Lamps
  - 148 Filament Designations
  - 148 Base Types and Bulb Shapes
  - 149 Footnotes





### Create a brighter standard





Dramatically changing the look of a room can be as easy as changing a light bulb.

**Natural Light Lamps** help you see things the way they should be. Natural Light's distinctive blue coating reduces dull light effects to provide light that is more vibrant and natural.

**DuraMax Long Life Lamps** reduce the hassle of replacing light bulbs every few months, since all DuraMax products last longer than standard incandescent light bulbs.

**Philips family of Specialty Incandescents** provide the perfect light for accent and display lighting as well as general lighting in a variety of applications. From tubular shapes and appliance bulbs, to colored lamps for special effects, this family of lamps is ideal for professional and consumer applications.

## UPGRADE TO ENERGY EFFICIENT LAMPS

CURRENT PRODUCT	PHILIPS UPGRADE PRODUCT	BENEFIT	PAGE
 <p>Incandescent A19</p>	 <p>Natural Light A19</p>	<ul style="list-style-type: none"> <li>&gt; Vibrant light similar to natural daylight</li> <li>&gt; Distinctive blue coating reduces dull light effects</li> </ul>	124
 <p>40W R20 Incandescent</p>	 <p>DuraMax R20 Flood</p>	<ul style="list-style-type: none"> <li>&gt; Long life household lighting reduces the hassle of replacing bulbs</li> <li>&gt; Soft, white accent light is suited for indoor track, recessed and pendant fixtures</li> </ul>	121

# INCANDESCENT LAMPS

## DuraMax Long Life

Watts	Bulb	Base	Product Number	Symbols, Footnotes	Ordering Code	Volts	Pkg. Qty.‡	Description	Class Filament	LCL (In.)	MOL (In.)	Rated Avg. Life (Hrs.)(93)	Approx. MBCP*	Lumens
15	A15	Med.	16860-9	▲	15A/WL 12/2	120	24	Soft White Long Life	B, C-9		3/2	3000		115
25	A19	Med.	16868-2	▲	25A/WL 12/2	120	24	Soft White Long Life	C, CC-6		4/6	3000		235
30 70 100	A21	3 Ct. Med.	16947-4	▲ (8)	30/100A/WL 12/1	120	12	Soft White Long Life 3-Way	C, 2CC-8		5/6	1750		285 920 1205
40	A19	Med. ++	16869-0	▲	40A/WL 12/4	120	48	Soft White Long Life	C, CC-6		4/6	1500		475
			16737-9	▲	40A/WL 24/4	120	96	Soft White Long Life	C, CC-6		4/6	1500		475
50 100 150	A21	3 Ct. Med.	16948-2	▲ (8)	50/150A/WL 12/1	120	12	Soft White Long Life 3-Way	C, 2CC-8		5/6	1750		575 1440 2015
50 200 250	A21	3 Ct. Med.	16949-0	▲ (8)	50/250A/WL 12/1	120	12	Soft White Long Life	C, 2CC-8		5/6	1750		575 3120 3695
60	A19	Med. ++	16874-0	▲	60A/WL 12/4	120	48	Soft White Long Life	C, CC-6		4/6	1500		830
			16738-7	▲	60A/WL 24/4	120	96	Soft White Long Life	C, CC-6		4/6	1500		830
		Med.	16877-3	▲	60A/WL 120/4	120	480	Soft White Long Life	C, CC-6		4/6	1500		830
75	A19	Med. ++	16879-9	▲	75A/WL 12/4	120	48	Soft White Long Life	C, CC-6		4/6	1500		1060
			16739-5	▲	75A/WL 24/4	120	96	Soft White Long Life	C, CC-6		4/6	1500		1060
100	A19	Med. ++	16862-5	▲	100A/WL 12/4	120	48	Soft White Long Life	C, CC-6		4/6	1500		1440
			16740-3	▲	100A/WL 24/4	120	96	Soft White Long Life	C, CC-8		4/6	1500		1440
150	A21	Med.	16866-6	▲	150A/WL 12/1	120	12	Soft White Long Life	C, CC-8		5/6	2000		2310
200	A21	Med.	16867-4	▲	200A/WL 6/1	120	6	Soft White Long Life	C, CC-8		5/6	1500		3100

For the most current product information, go to the e-catalog on [www.philips.com](http://www.philips.com)  
Incandescent symbols and footnotes located on page 149



# INCANDESCENT LAMPS

## DuraMax Long Life

Watts	Bulb	Base	Product Number	Symbols, Footnotes	Ordering Code	Volts	Pkg. Qty.‡	Description	Class Filament	LCL (In.)	MOL (In.)	Rated Avg. Life (Hrs.)(93)	Approx. MBCP*	Lumens	
25	G25	Med.	16748-6	▲	25G25/W/LL 12/1	120	12	White Long Life Globe	C, CC-6	4 7/8	2000	210			
			16887-2	▲	25G25/CL/LL 12/1	120	12	Clear Long Life Globe	C, CC-6	4 7/8	2000	235			
			16901-1	▲	25G25/CL/LL 4/3	120	12	Clear Long Life Globe	C, CC-6	4 7/8	2000	235			
			16902-9	▲	25G25/W/LL 4/3	120	12	White Long Life Globe	C, CC-6	4 7/8	2000	210			
40	G25	Med.	16903-7	▲	40G25/CL/LL 4/3	120	12	Clear Long Life Globe	C, CC-6	4 7/8	2000	460			
			16904-5	▲	40G25/W/LL 4/3	120	12	White Long Life Globe	C, CC-6	4 7/8	2000	415			
			16746-0	▲	40G25/W/LL 12/1	120	12	White Long Life Globe	C, CC-6	4 7/8	2000	415			
			16747-8	▲	40G25/CL/LL 12/1	120	12	Clear Long Life Globe	C, CC-6	4 7/8	2000	460			
			16702-3	▲	40G25/CT 6/1	120	6	Clear Long Life Chrome Top	C, C-9	4 7/8	2000	200			
			G40	Med.	16857-5	▲	40G40/CL/LL 6/1	120	6	Clear Long Life Globe	C, C-9	6 1/8	3000	372	
					16858-3	▲	40G40/W/LL 6/1	120	6	White Long Life Globe	C, C-9	6 1/8	3000	335	
60	G25	Med.	16749-4	▲	60G25/W/LL 12/1	120	12	White Long Life Globe	C, CC-6	4 7/8	2000	700			
			16896-2	▲	60G25/CL/LL 12/1	120	12	Clear Long Life Globe	C, CC-6	4 7/8	2000	775			
			16899-6	▲	60G25/CL/LL 4/3	120	12	Clear Long Life Globe	C, CC-6	4 7/8	2000	775			
			16900-3	▲	60G25/W/LL 4/3	120	12	White Long Life Globe	C, CC-6	4 7/8	2000	700			
			G30	Med.	16849-2	▲	60G30/W/LL 6/1	120	6	White Long Life Globe	C, C-9	5 1/2	3000	580	
					G40	Med.	16851-8	▲	60G40/W/LL 6/1	120	6	White Long Life Globe	C, C-9	6 1/8	3000
			16852-6	▲			60G40/CL/LL 6/1	120	6	Clear Long Life Globe	C, C-9	6 1/8	3000	665	
100	G25	Med.	13423-9	▲	100G25/W/LL 12/1	120	12	White Long Life Globe	C, CC-6	4 7/8	2000	1180			
			G30	Med.	16850-0	▲	100G30/W/LL 6/1	120	6	White Long Life Globe	C, C-9	5 1/2	3000	945	
					G40	Med.	16853-4	▲	100G40/W/LL 6/1	120	6	White Long Life Globe	C, C-9	6 1/8	3000
								16859-1	▲	100G40/CL/LL 6/1	120	6	Clear Long Life Globe	C, C-9	6 1/8
150	G40	Med.	16854-2	▲	150G40/W/LL 6/1	120	6	White Long Life Globe	C, C-9	6 1/8	3000	1770			

### DURAMAX LONG LIFE REFLECTORS (87)

30	R20	Med.	16753-6	▲	30R20/LL 12/1	120	12	Frost Long Life Reflector	C, CC-6	3 1/8	2500	350	205
45	R20	Med.	20323-2	▲	45R20/LL 12/1	120	12	Long Life Reflector Flood	C, CC-6	3 1/8	2500	385	
	BR30	Med.	16751-0	▲	45BR30/FL55/LL 12/1	120	12	Long Life Reflector Flood	C, CC-6	5 3/8	2500	340	
65	BR30	Med.	16768-4	▲	65BR30/FL55/LL 12/1	120	12	Long Life Reflector Flood	C, CC-6	5 3/8	2500	510	595
			16769-2	▲	65BR30/SP20/LL 12/1	120	12	Long Life Reflector Spot	C, CC-6	5 3/8	2500	530	610
	BR40	Med.	16741-1	▲	65BR/FL60/LL 8/1	120	8	Long Life Reflector Flood	C, CC-6	6 1/2	2500	500	630

For the most current product information, go to the e-catalog on [www.philips.com](http://www.philips.com)  
 Incandescent symbols and footnotes located on page 149



# INCANDESCENT LAMPS

## DuraMax Long Life

Watts	Bulb	Base	Product Number	Symbols, Footnotes	Ordering Code	Volts	Pkg. Qty.†	Description	Class Filament	LCL (In.)	MOL (In.)	Rated Avg. Life (Hrs.)(93)	Approx. MBCP* Lumens
40	A19	Med. ++	16797-2	▲	40A/CL/LL 12/2	120	24	Clear Long Life	C, CC-6		4%	1500	505
60	A19	Med. ++	16794-0	▲	60A/CL/LL 12/2	120	24	Clear Long Life	C, CC-6		4%	1500	900
75	A19	Med. ++	16801-3	▲	75A/CL/LL 12/2	120	24	Clear Long Life	C, CC-6		4%	1500	1080
100	A19	Med. ++	15008-6	▲	100A/CL/LL 12/2	120	24	Clear Long Life	C, CC-6		4%	1500	1440
150	A21	Med.	15009-4	▲	150A/CL/LL 12/1 TP	120	12	Clear Long Life	C, CC-8		5%	1500	2000
200	A23	Med.	16798-0	▲	200A/CL/LL 6/1	120	6	Clear Long Life	C, CC-8		6%	1500	3400

### DURAMAX LONG LIFE FAN LIGHTS

40	A15	Med.	16934-2	▲	BC40A15/FAN/CL/LL 6/2	120	12	Clear Long Life Fan	C, C-9		3½%	2000	395
			16935-9	▲	BC40A15/FAN/W/LL 6/2	120	12	White Long Life Fan	C, C-9		3½%	2000	365
60	A15	Med.	16945-8	▲	BC60A15/FAN/W/LL 6/2	120	12	White Long Life Fan	C, C-9		3½%	2000	570
			16946-6	▲	BC60A15/FAN/CL/LL 6/2	120	12	Clear Long Life Fan	C, C-9		3½%	2000	630

### DURAMAX LONG LIFE DECORATIVES (12)

3	CA10	Cand.	16698-2	▲	BC3CA10C/CL/LL 6/1	120	6	Clear Long Life Flicker Flame	B, C-7A		4%	2000	
15	BA9	Cand.	16811-2	▲	BC15BA9C/CL/LL 6/2	120	12	Clear Long Life Bent Tip	B, CC-2V, C-7A		4%	2000	110
			16696-6	▲	BC15BA9C/CL/LL 6/4	120	24	Clear Long Life Bent Tip	B, CC-2V, C-7A		3%	2000	110
	F10	Cand.	16830-2	▲	BC15F10C/CL/LL 6/2	120	12	Clear Long Life Flame	B, C-7A		3%	2000	95
			16831-0	▲	BC15F10C/A/LL 6/2	120	12	Amber Long Life Flame	B, C-7A		3%	2000	85
25	BA9	Cand.	16719-7	▲	BC25BA9C/CL/LL 6/4	120	24	Clear Long Life Bent Tip	C, CC-2V, C-7A		4%	2000	150
			16806-2	▲	BC25BA9C/CL/LL 6/2	120	12	Clear Long Life Bent Tip	C, CC-2V, C-7A		4%	2000	150
			16810-4	▲	BC25BA9C/F/LL 6/2	120	12	Frost Long Life Bent Tip	C, CC-2V, C-7A		4%	2000	145
	BA9½	Med.	16819-5	▲	BC25BA9½/CL/LL 6/2	120	12	Clear Long Life Bent Tip	C, CC-2V, C-7A		4%	2000	150
	B10½	Cand.	16824-5	▲	BC25B10½/C/CL/LL 6/2	120	12	Clear Long Life Blunt Tip	C, CC-2V, C-7A		4%	2000	150
	B13	Med.	16827-8	▲	BC25B13/CL/LL 6/2	120	12	Clear Long Life Blunt Tip	C, C-7A		4%	2000	150
	CA8	Cand.	13568-1	▲	BC25CA8C/CL/LL 6/2	120	12	Clear Petite Long Life Bent Tip	C, CC-2V		3½%	2000	220

For the most current product information, go to the e-catalog on [www.philips.com](http://www.philips.com)  
Incandescent symbols and footnotes located on page 149



# INCANDESCENT LAMPS

## DuraMax Long Life

Watts	Bulb	Base	Product Number	Symbols, Footnotes	Ordering Code	Volts	Pkg. Qty.‡	Description	Class Filament	LCL (In.)	MOL (In.)	Rated Avg. Life (Hrs.)(93)	Approx. MBCP*	Lumens			
25	F10	Cand.	16832-8	▲	BC25F10C/CL/LL 6/2	120	12	Clear Long Life Flame	B, C-7A		3 1/8	2000		105			
			16833-6	▲	BC25F15/CL/LL 6/2	120	12	Clear Long Life Flame	B, C-9		4 1/8	2000		150			
			16839-3	▲	BC25F15/IR/LL 6/2	120	12	Iridescent Long Life Flame	C, C-9		4 1/8	2000		150			
			16841-9	▲	BC25F15/A/LL 6/2	120	12	Amber Long Life Flame	B, C-9		4 1/8	2000		130			
	G16 1/2	Cand.	16845-0	▲	BC25G16 1/2 C/CL/LL 6/2	120	12	Clear Long Life Globe	B, C-7A		3	2000		200			
			16847-6	▲	BC25G16 1/2 CW/LL 6/2	120	12	White Long Life Globe	B, C-7A		3	2000		165			
			13535-0	▲	BC25G16 1/2 CL/LL 6/2	120	12	Clear Long Life Globe	C, CC-2V		2 3/4	2000		180			
			13534-3	▲	BC25G16 1/2 W/LL 6/2	120	12	White Long Life Globe	C, CC-2V		2 3/4	2000		160			
			40	BA9	Cand.	16720-5	▲	BC40BA9C/CL/LL 6/4	120	24	Clear Long Life Bent Tip	C, CC-2V, C-7A		4 3/8	2000		300
						16807-0	▲	BC40BA9C/CL/LL 6/2	120	12	Clear Long Life Bent Tip	C, CC-2V, C-7A		4 3/8	2000		300
16809-6	▲	BC40BA9C/F/LL 6/2				120	12	Frost Long Life Bent Tip	C, CC-2V, C-7A		4 3/8	2000		295			
16760-1	▲	BC40BA9 1/2 CL/LL 6/4				120	24	Clear Long Life Bent Tip	C, CC-2V, C-7A		4 3/8	2000		300			
BA9 1/2	Med.	16820-3		▲	BC40BA9 1/2 CL/LL 6/2	120	12	Clear Long Life Bent Tip	C, CC-2V, C-7A		4 3/8	2000		300			
		16821-1		▲	BC40BA9 1/2 F/LL 6/2	120	12	Frost Long Life Bent Tip	C, CC-2V, C-7A		4 3/8	2000		295			
		16825-2		▲	BC40B10 1/2 C/CL/LL 6/2	120	12	Clear Long Life Blunt Tip	C, CC-2V		4 3/8	2000		300			
		16828-6		▲	BC40B13/CL/LL 6/2	120	12	Clear Long Life Blunt Tip	C, C-7A		4 3/8	2000		300			
		F15		Med.	16835-1	▲	BC40F15/CL/LL 6/2	120	12	Clear Long Life Flame	C, C-9		4 1/8	2000		385	
					16837-7	▲	BC40F15/IR/LL 6/2	120	12	Iridescent Long Life Flame	C, C-9		4 1/8	2000		370	
G16 1/2	Cand.	16838-5	▲	BC40F15/W/LL 6/2	120	12	White Long Life Flame	C, C-9		4 1/8	2000		300				
		16846-8	▲	BC40G16 1/2 C/CL/LL 6/2	120	12	Clear Long Life Globe	C, CC-2V, C-7A		3	2000		300				
G16 1/2	Med.	16848-4	▲	BC40G16 1/2 CW/LL 6/2	120	12	White Long Life Globe	C, CC-2V, C-7A		3	2000		245				
		13537-6	▲	BC40G16 1/2 CL/LL 6/2	120	12	Clear Long Life Globe	C, CC-2V		2 3/4	2000		300				
G16 1/2	Med.	13536-8	▲	BC40G16 1/2 W/LL 6/2	120	12	White Long Life Globe	C, CC-2V		2 3/4	2000		270				
		60	BA9	Cand.	16808-8	▲	BC60BA9C/CL/LL 6/2	120	12	Clear Long Life Bent Tip	C, CC-2V, C-7A		4 3/8	2000		550	
16721-3	▲				BC60BA9C/CL/LL 6/4	120	24	Clear Long Life Bent Tip	C, CC-2V, C-7A		4 3/8	2000		550			
16805-4	▲				BC60BA9C/F/LL 6/2	120	12	Frost Long Life Bent Tip	C, CC-2V, C-7A		4 3/8	2000		545			
16822-9	▲				BC60BA9 1/2 CL/LL 6/2	120	12	Clear Long Life Bent Tip	C, CC-2V, C-7A		4 3/8	2000		550			
BA9 1/2	Med.		16823-7	▲	BC60BA9 1/2 F/LL 6/2	120	12	Frost Long Life Bent Tip	C, CC-2V, C-7A		4 3/8	2000		545			
			16826-0	▲	BC60B10 1/2 C/CL/LL 6/2	120	12	Clear Long Life Blunt Tip	C, CC-2V		4 3/8	2000		550			
B13	Med.		16829-4	▲	BC60B13/CL/LL 6/2	120	12	Clear Long Life Blunt Tip	C, C-7A		4 3/8	2000		550			
F15	Med.		16842-7	▲	BC60F15/CL/LL 6/2	120	12	Clear Long Life Flame	C, C-9		4 1/8	2000		630			
G16 1/2	Cand.		16699-0	▲	BC60G16 1/2 C/CL/LL 6/2	120	12	Clear Long Life Globe	C, CC-2V		3	2000		540			
			16700-7	▲	BC60G16 1/2 CW/LL 6/2	120	12	White Long Life Globe	C, CC-2V		3	2000		450			
G16 1/2	Med.	13538-4	▲	BC60G16 1/2 CL/LL 6/2	120	12	Clear Long Life Globe	C, CC-2V		2 3/4	2000		540				
		13530-1	▲	BC60G16 1/2 W/LL 6/2	120	12	White Long Life Globe	C, CC-2V		2 3/4	2000		420				
100	F20	Med.	16844-3	▲	100F20/POSTLT/CL/LL 6/1	120	6	Clear Long Life PostLight	C, C-9		5 1/8	4000		1250			

For the most current product information, go to the e-catalog on [www.philips.com](http://www.philips.com)  
Incandescent symbols and footnotes located on page 149



# INCANDESCENT LAMPS

## Natural Light

Watts	Bulb	Base	Product Number	Symbols, Footnotes	Ordering Code	Volts	Pkg. Qty. #	Description	Class Filament	LCL (In.)	MOL (In.)	Rated Avg. Life (Hrs.)(93)	Approx. MBCP*	Lumens
<b>NATURAL LIGHT STANDARD</b>														
40	A19	Med.	13558-2	▲	40A/NTL 12/4	120	48	Natural Light Standard	C, CC-6		4%	1000		400
60	A19	Med.	13559-0	▲	60A/NTL 12/4	120	48	Natural Light Standard	C, CC-6		4%	1000		680
75	A19	Med.	13560-8	▲	75A/NTL 12/4	120	48	Natural Light Standard	C, CC-6		4%	750		950
100	A19	Med.	13561-6	▲	100A/NTL 12/4	120	48	Natural Light Standard	C, CC-6		4%	750		1350
<b>NATURAL LIGHT STANDARD LONG LIFE</b>														
75	A19	Med.	15129-0		75A/NTL/2X 12/4	120	48	Natural Light Standard Long Life	C, CC-6		4%	1500		790
100	A19	Med.	15130-8		100A/NTL/2X 12/4	120	48	Natural Light Standard Long Life	C, CC-6		4%	1500		1210
<b>NATURAL LIGHT 3-WAY</b>														
50 100 150	A21	3 Ct. Med.	13564-0	▲ (8)	50/150A/NTL 12/1	120	12	Natural Light 3-Way	C, 2CC-6		5%	1200		490 1250 1740
<b>NATURAL LIGHT GLOBE</b>														
40	G25	Med.	13563-3	▲	40G25/NTL 6/1	120	6	Natural Light Globe	C, CC-6		4%	1500		320
<b>NATURAL LIGHT FAN</b>														
40	A15	Med.	13565-7	▲	BC40A15/FAN/NTL 6/2	120	12	Natural Light Fan	C, C-9		3½%	1500		340
<b>NATURAL LIGHT REFLECTOR</b>														
50	R20	Med.	13797-5	▲ (87)	50R20/FL/NTL 12/1	120	12	Natural Light Reflector	C, CC-6		3½%	2000		265
65	BR30	Med.	13785-1	▲ (87)	65BR30/FL/NTL 12/1	120	12	Natural Light Reflector	C, CC-6		5%	2000		500
<b>NATURAL LIGHT DECORATIVE</b>														
40	G16½	Cand.	14129-1	▲ (12)	BC40G16-½C/NTL 6/2	120	12	Natural Light Decorative	C, CC-2V, C-7A		3	2000		270
	B10½	Cand.	14125-9	▲ (12)	BC40B10-½C/NTL 6/2	120	12	Natural Light Decorative	C, CC-2V, C-7A		4%	2000		270
	B13	Med.	14127-5	▲ (12)	BC40B13/NTL 6/2	120	12	Natural Light Decorative	C, C-7A, CC-2V		4%	2000		270

For the most current product information, go to the e-catalog on [www.philips.com](http://www.philips.com)  
Incandescent symbols and footnotes located on page 149



# INCANDESCENT LAMPS

Watts	Bulb	Base	Product Number	Symbols, Footnotes	Ordering Code	Volts	Pkg. Qty.‡	Description	Class Filament	LCL (In.)	MOL (In.)	Rated Avg. Life (Hrs.)(93)	Approx. MBCP*	Lumens
3	S6	Cand.	37374-6	▲	3S6/5	120-130	48	Clear Indicator	B, C-7A	1 1/8		3000		12
4	C-7	Cand.	25706-3	▲	BC4C7 12/2	120	24	Clear Night Light	B, C-7A	2 1/8		3000		16
			24741-1	▲	BC4C7/4 12/4	120	48	Clear Night Light	B, C-7A	2 1/8		3000		16
			25708-9	▲	BC4C7/W 12/2	120	24	White Night Light	B, C-7A	2 1/8		3000		14
6	S6	Cand.	24835-1		6S6	120-130	48	Clear Indicator	B, C-7A	1 1/8		1500		39
			23462-5		6S6	145	48	Clear Indicator	B, C-7A	1 1/8		1500		37
			23476-5		6S6	155	48	Clear Indicator	B, C-7A	1 1/8		1500		37
			23477-3		6S6/3	130	48	Clear Vibration	B, C-7A	1 1/8		1500		18
			37376-1		6S6DC	120-130	48	Clear Indicator	B, C-7A	1 1/8	1 1/8	1500		39
7	C-7	Cand.	37378-7	▲	7C7	120-130	24	Clear Indicator	B, C-7A	2 1/8		3000		45
			25714-7	▲	BC7C7/W 12/2	120	24	White Night Light	B, C-7A	2 1/8		3000		35
7 1/2	S11	Med.	24811-2	▲	7 1/2 S	120-130	24	Clear	B, C-7A	2 1/8		1400		45
			37380-3	▲	7 1/2 S/W	120-130	24	White Night Light	B, C-7A	2 1/8		1400		35
10	S6	Cand.	23485-6	▲	10S6/10	230	48	Clear Indicator	B, C-7A	1 1/8		1500		65
			23488-0	▲	10S6/10	250	48	Clear Indicator	B, C-7A	1 1/8		1500		65
	S11	Inter.	37381-1	▲	10S11N	120-130	24	Clear	B, C-7A	1 1/8	2 1/8	1500		70
			13828-9		10S14/IF	130	24	Frost Sign	B, C-9	3 1/8		1500		82
	S14	Med.	13829-7		10S14	120-130	24	Clear Sign	B, C-9	3 1/8		1500		82
11	S14	Med.	13822-2		BC11S14/W 120V 6/1 TP	120	6	White Sign	B, C-9	3 1/8		3000		
			16706-4		BC11S14/F 130V 6/1 PK	130	6		B, C-9	3 1/8		3000		70
			16705-6		BC11S14/CL 130V 6/1 PK	130	6	Clear Sign	B, C-9	3 1/8		3000		70
			13830-5		11S14 120/130V 24/1	120-130	24		B, C-9	3 1/8		3000		75
15	A15	Med.	14587-0	▲	15A15/CL	120-130	60	Clear	B, C-9	2 3/8	3 1/8	2500		110
			16860-9	▲	15AWL 12/2	120	24	Soft White Long Life	B, C-9	3 1/8		3000		115
			14585-4	□	15A15/35	130	60	Frost Industrial Service	B, C-9	3 1/8		3500		123
	T6	Cand.	23582-0	▲	15T6	120	24	Clear Switchboard	B, C-7A	3 1/8		2000		110
			24815-3	▲ (63)	15T6	140-150	24	Clear Switchboard	B, C-7A	3 1/8		2000		100
	T7	D.C. Bay	22307-3	(4)	15T7DC	120	24	Clear Appliance	B, C-7A	2 1/8		1000		104
		Cand.	22308-1	▲(4)	15T7C	120	24	Clear Appliance	B, C-7A	2 1/8		1000		104
	T7	Inter.	24816-1	▲(4)	15T7N	120	24	Clear Appliance	B, C-7A	2 1/8		1000		104
	T8	Inter.	23594-5	▲	15T8N	120	24	Clear Appliance	B, C-7A	2 1/8		1000		110
	T10	Med.	39041-9	▲	BC15T10 6/1	120	6	Clear Showcase	B, C-9	5 1/8		2500		120

For the most current product information, go to the e-catalog on [www.philips.com](http://www.philips.com)  
Incandescent symbols and footnotes located on page 149





# INCANDESCENT LAMPS

Watts	Bulb	Base	Product Number	Symbols, Footnotes	Ordering Code	Volts	Pkg. Qty.‡	Description	Class Filament	LCL (In.)	MOL (In.)	Rated Avg. Life (Hrs.)(93)	Approx. MBCP* Lumens		
20	T6½	Inter.	24853-4		20T6-½IF	120	24	Frost Exit Sign	B, C-8		5½	5000	150		
	T6½	D.C. Bay	24839-3		20T6-½DC/IF	120	24	Frost Exit Sign	B, C-8		5½	5000	150		
			24838-5		20T6-½DC	120	24	Clear Exit Sign	B, C-8		5½	5000	160		
25	A15	Med.	14584-7	▲	25A15/1	120	60	Frost Refrigerator	B, C-9		3½	1000	210		
			16710-6	▲	BC25A15/IF 12/1	120	12	Frost Appliance	B, C-9		3½	1000	210		
			16868-2	▲	25A/WL 12/2	120	24	Soft White Long Life	C, CC-6		4%	3000	235		
			14421-2	▲	25A/TG 6/1	120	6	Transparent Green	B, C-9		3½	3000			
			14422-0	▲	25A/TR 6/1	120	6	Transparent Red	B, C-9		3½	3000			
			14423-8	▲	25A/TY 6/1	120	6	Transparent Yellow	B, C-9		3½	3000			
			14420-4	▲	25A/TB 6/1	120	6	Transparent Blue	B, C-9		3½	3000			
			14152-3	▲	25A			24	60	Frost	C, C-6		4%	1000	345
			14153-1	▲	25A			34	60	Frost Train	C, C-6		4%	1000	325
			25564-6	▲	25A/IF			120	48	Frost	C, CC-6		4%	2500	232
	A19	Med.	20178-0		25A/IF/TG 24/2	130	48	TuffGuard Coated Lamp	C, CC-6		4%	2500			
			25566-1	▲	25A/IF	130	48	Frost	C, CC-6		4%	2500	232		
			25569-5	▲	25A/CL 24/2	120-130	48	Clear	C, CC-6		4%	2500	220		
			14973-2	▲	25A/TF	120	120	Frost Silicone Coated	B, C-9		3½	2500			
			14160-6	▲	25A/R	120	60	Red	B, C-9		3½	2500			
			14158-0	▲	25A/Y	120	60	Yellow	B, C-9		3½	2500			
			37386-0	▲	25A/RS	120-130	120	Frost Rough Service	R, C-9		3½	1000	235		
			37387-8	□	25A19/35	120-130	60	Frost Industrial Service	B, C-9		3½	3500	220		
			R14	Inter.	24828-6	■	R14N	120	24	Mini Refl. Lt. Fr. Actual Bulb Dia. 1¼"	C, CC-2V		2%	1500	200
					13336-3	■	BC25R14N 120V 6/1 TP	120	6	Mini Refl. Lt. Fr.	C, CC-2V		3½	1500	150
	T6½	Inter.	37388-6	▲	25T6-½IF	120-130	24	Frost Appliance	B, C-8		5½	1000	210		
37389-4			▲	25T6-½	120-130	24	Clear Appliance	B, C-8		5½	1000	220			
T6½	D.C. Bay	37392-8		25T6-½DC	120-130	24	Clear Appliance	B, C-8		5½	1000	220			
T8	D.C. Bay	24827-8	(4)	25T8DC	120	24	Clear Appliance	B, C-7A		2%	1000	210			
T8	Inter.	23593-7	▲ (4)	25T8N	120	24	Clear Appliance	B, C-7A		2%	1000	220			
T10	Med.	39040-1	▲	BC25T10/IF/TP 6/1	120	6	Frost Showcase	B, C-8		5%	1000	245			
		13812-3	▲	25T10/IF 24/1	120-130	24	Frost Showcase	B, C-8		5%	1000	255			
		38985-8	▲	BC25T10/TP 6/1	120	6	Clear Showcase	B, C-8		5%	1000	250			
		13813-1	▲	25T10 24/1	120-130	24	Clear Showcase	B, C-8		5%	1000	260			
		20179-8	▲	25T10/TG	120-130	24	TuffGuard Coated Clear Showcase	B, C-8		5%	1000	260			

For the most current product information, go to the e-catalog on [www.philips.com](http://www.philips.com)  
Incandescent symbols and footnotes located on page 149



# INCANDESCENT LAMPS

Watts	Bulb	Base	Product Number	Symbols, Footnotes	Ordering Code	Volts	Pkg. Qty.‡	Description	Class Filament	LCL (In.)	MOL (In.)	Rated Avg. Life (Hrs.)(93)	Approx. MBCP*	Lumens
-------	------	------	----------------	--------------------	---------------	-------	------------	-------------	----------------	-----------	-----------	----------------------------	---------------	--------

## INCANDESCENT LAMPS (BY WATTAGE) CONTINUED

30	R20	Med.	22078-0	▲ (87)	30R20 12/I	130	12	Lt. Frost Reflector	C, CC-6		3 5/8	2000		205
			20181-4	▲ (87)	30R20/TG 120V 12/I	120	12	TuffGuard Coated Reflector Lamp	C, CC-6		3 5/8	2000		205
			20165-7	▲ (87)	30R20 12/I	120	12	Lt. Frost Reflector	C, CC-6		3 5/8	2000		205
			14597-8	□ (66)	30R20/SFL/TF	130	60	Frost Silicone Coated Reflector Sign	C, CC-6		3 5/8	6000		210
			16753-6	▲ (87)	30R20/LL 12/I	120	12	Frost Long Life Reflector	C, CC-6		3 5/8	2500	335	205
30 70 100	A21	3 Ct. Med.	16947-4	▲ (8)	30/100A/WL 12/I	120	12	Soft White Long Life 3-Way	C, 2CC-8		5 1/2	1750		285 920 1205
			36662-5	▲ (8)	30/100A/W 12/I	120	12	Soft White 3-Way	C, 2CC-8		5 1/2	1200		310 945 1255
34	A19	Med.	22234-9	▲ ✓ \$	40A-34A/EW	120	48	Frost Econ-o-watt	C, CC-6		4 1/8	1500		410
			22235-6	▲ \$	40A-34A/EW	130	48	Frost Econ-o-watt Ratings @ 120V = 30W	C, CC-6		4 1/8	1500	4245	400 305
38	A19	Med.*	21446-0		38A/CL/LL 12-2 WPTP	120	24	Clear Longer Life	C, CC-6		4 1/8	1500		420
			21443-7		38A/W/TP 12/4	120	48	Soft White	C, CC-6		4 1/8	1000		415
			21462-7		38A/W/TP 24/4	120	96	Soft White	C, CC-6		4 1/8	1000		415
			21444-5		38A/CL	130	48	Clear	C, CC-6		4 1/8	1500		420
			21447-8		38A/WL/TP 12/4	120	48	Soft White Longer Life	C, CC-6		4 1/8	1500		385
			21495-7		38A/WL 24/4	120	96	Soft White Longer Life	C, CC-6		4 1/8	1500		385
40	A15	Med.	29999-0	▲	BC40A15/CL/LL	120	12	Clear Longer Life Home Appliance	C, C-9		3 1/2	1750		400
			37398-5	▲	40A15	120-130	120	Frost Home Appliance	C, C-9		3 1/2	1000		415
			20182-2	▲	40A15/TG	120-130	120	TuffGuard Coated Frost Home Appliance	C, C-9		3 1/2	1000		415
			14073-1	▲	40A15/CL PRO	130	24	ProPack Clear	C, C-9		3 1/2	1000		415
			14963-3	▲ □ (66)	40A15/TF	120-130	120	Frost Refrigerator Silicone Coated	C, C-9		3 1/2	1000		
			16934-2	▲	BC40A15/FAN/CL/LL 6/2	120	12	Clear Long Life Fan	C, C-9		3 1/2	2000		395
			16935-9	▲	BC40A15/FAN/W/LL 6/2	120	12	White Long Life Fan	C, C-9		3 1/2	2000		365
			20002-2	▲	40A15/22	120	120	Clear Home Oven	C, C-9		3 1/2	1000		420
			13565-7	▲	BC40A15/FAN/NTL 6/2	120	12	Natural Light Fan	C, C-9		3 1/2	1500		340
			A19	Med. ++	27081-9	▲	40A 12/4	120	48	Frost	C, CC-6		4 1/8	1500
	16797-2	▲			40A/CL/LL 12/2	120	24	Clear Long Life	C, CC-6		4 1/8	1500		505
	Med ++	16737-9		▲	40A/WL 24/4	120	96	Soft White Long Life	C, CC-6		4 1/8	1500		475
		16869-0		▲	40A/WL 12/4	120	48	Soft White Long Life	C, CC-6		4 1/8	1500		475
	Med ++	13558-2		▲	40A/NTL 12/4	120	48	Natural Light Standard	C, CC-6		4 1/8	1000		400
		37465-2		▲	40A	120	48	Frost	C, CC-6		4 1/8	1500		495
	Med ++	37466-0		▲	40A	130	48	Frost Ratings @ 120V = 35W	C, CC-6		4 1/8	1500	4245	490 375
		13993-1		▲	40A 120/I PRO	130	120	Frost ProPack	C, CC-6		4 1/8	1500		490
	Med ++	37399-3		▲	40A/CL	120-130	48	Clear Ratings @ 120V = 37W	C, CC-6	3 1/2	4 1/8	1500	2550	500 435
		Med		20183-0	▲	40A/CL/TG	120-130	48	TuffGuard Coated Clear	C, CC-6		4 1/8	1500	

For the most current product information, go to the e-catalog on [www.philips.com](http://www.philips.com)  
Incandescent symbols and footnotes located on page 149



# INCANDESCENT LAMPS

Watts	Bulb	Base	Product Number	Symbols, Footnotes	Ordering Code	Volts	Pkg. Qty.†	Description	Class Filament	LCL (In.)	MOL (In.)	Rated Avg. Life (Hrs.)(93)	Approx. MBCP* Lumens
40	K19 Med.	Med.	30728-0	▲	40K19/DL 6/2	120	12	Director	C, C-9		4%	1150	500
			35454-8		40R14/SP	120	24	Light Fr. Mini. Refl.	C, CC-2V		2%	1500	250
			13355-3		BC40R14N 6/1 TP	120	6	Light Fr. Mini. Refl.	C, CC-2V		2%	1500	
			16704-9		BC-40R14/SP 120V 6/1 PK TP	120	6	Surge Proof Light Mini. Refl.	C, CC-2V		2%	1500	250
	R16 Med.	Med.	13337-1		BC40R16/SP 6/1 TP	120	6	Surge Proof Light Mini. Refl.	C, CC-2V		3%	1500	250
	S11 Inter.	Inter.	21216-7	▲	BC40S11/NTP 16/1	120	16	Clear High Intensity	C, CC-2V		2%	500	440
			14075-6		40S11N/IF PRO	130	24	ProPack Clear High Intensity	C, CC-2V		2%	500	420
			24830-2	▲	40S11N/IF	120	24	Frost High Intensity	C, CC-2V		2%	500	420
	T6½ Inter.	Inter.	20491-7	▲	BC40T6-½/2 12/1	120	12	Clear Refrigerator	B, C-8		5%	1000	350
	T10 Med.	Med.	38989-0	▲	BC40T10/IF/TP 6/1	120	6	Frost Showcase	B, C-8		5%	1000	250
			13814-9	▲	40T10/IF 24/1	120-130	24	Frost Showcase	B, C-8		5%	1000	435
			38988-2	▲	BC40T10/TP 6/1	120	6	Clear Showcase	B, C-8		5%	1000	435
			13815-6	▲	40T10 24/1	120-130	24	Clear Showcase	B, C-8		5%	1000	440
			20184-8	▲	40T10/TG	120-130	24	TuffGuard Coated Clear Showcase	B, C-8		5%	1000	440
			BR30 Med.	Med.	16751-0	▲ (87)	45BR30/FL55/LL 12/1	120	12	Long Life Reflector Flood	C, CC-6		5%
	R20 Med.	Med.	20323-2	▲ (87)	45R20/LL 12/1	120	12	Long Life Reflector Flood	C, CC-6		3%	2500	385
20322-4			▲ (87)	45R20 12/1	130	12	Reflector Flood	C, CC-6		3%	2000	380	
20324-0			(87)	45R20 12/1 PRO	130	12	ProPack Reflector Flood	C, CC-6		3%	2000	380	
50			A19 Med.	Med.	14154-9	▲	50A	24	60	Frost Train	C, C-6		4%
24569-6	▲	50A			250	120	Frost	C, RC-9		3%	1000		
21952-7	▲	50A19/31			120	120	Clear Commercial Oven	B, C-9	2½	3%	1000	500	
37403-3	▲	50A/RS			120-130	120	Frost Rough Service Ratings @ 120V =47W	B, RC-9		3%	1000	500	
20163-2	▲	50A/RS 12/2			120	24	Frost Rough Service	B, RC-9		3%	1000	480	
24572-0	▲	50A/RS			250	120	Frost Rough Service	C, RC-9		3%	1000	355	
14977-3	▲ (66)	50A/RS/TF			120-130	120	Frost Rough Service Silicone Coated	B, C-17A		3%	1000		
BR30 Med.	Med.	24889-8			▲ (87)	50BR30/FL	120	12	Reflector Flood	C, CC-6		5%	2000

For the most current product information, go to the e-catalog on [www.philips.com](http://www.philips.com)  
Incandescent symbols and footnotes located on page 149



# INCANDESCENT LAMPS

Watts	Bulb	Base	Product Number	Symbols, Footnotes	Ordering Code	Volts	Pkg. Qty.‡	Description	Class Filament	LCL (In.)	MOL (In.)	Rated Avg. Life (Hrs.)(93)	Approx. MBCP*	Lumens	
50	ER30	Med.	14355-2	▲ \$ (87)	50ER30	120-130	24	Elliptical Reflector	C, CC-6		6 3/4	2000		360	
	PAR36	M.P.	29603-8		50PAR36/WFL	12	12	Compact Wide Flood	C, C-6		2 3/4	2000			
			22859-3		50PAR36/NSP	12	12	Compact Narrow Spot	C, C-6		2 3/4	2000			
	R20	Med.	20187-1	▲ (87)	50R20/TG 12/1	120	12	TuffGuard Coated Reflector Lamp	C, CC-6			3 1/8	2000		380
			26635-3	▲ X (19,87)	50R20/PK	120	60	Pink Reflector	C, CC-6			3 1/8	2000		
			13797-5	▲ (87)	50R20/FL/NTL 12/1	120	12	Natural Light Reflector	C, CC-6			3 1/8	2000		265
		Med.	16709-8	▲ (19,87)	50R20/Agro 12/1	120	12	Agro-Lite Plant Light	C, CC-6		3 1/8	2000			
50 100 150	A21	3 Ct. Med.	36671-6	▲ (8)	50/150A/W 12/1	120	12	Soft White 3-Way	C, 2CC-8			5 1/8	1200		610 1510 2120
			31739-6	▲ (8)	50/150A/STP/PK 8/1	120	8	Pink Softone Pastel	C, 2CC-8			5 1/8	1200		550 1310 1860
			13564-0	▲ (8)	50/150A/NTL 12/1	120	12	Natural Light Reflector	C, 2CC-6			5 1/8	1200		490 1250 1740
			16948-2	▲ (8)	50/150A/WL 12/1	120	12	Soft White Long Life 3-Way	C, 2CC-8			5 1/8	1750		575 1440 2015
			32359-2	▲ □ (8)	50/150A/DL 12/1	120	12	Director 3-Way	C, 2CC-8			5 1/8	1200		530 1260 1790
						16949-0	▲ (8)	50/250A/WL 12/1	120	12	Soft White Long Life 3-Way	C, 2CC-8		5 1/8	1750
52	A19	Med.	22237-2	▲ ✓	60A-52A/EW	120	48	Frost Econ-o-watt	C, CC-6			4 1/8	1000		700
			22239-8	▲ \$	60A-52A/EW	130	48	Frost Econ-o-watt	C, CC-6			4 1/8	1000		680
			14999-6	▲ \$	60A-52A/99/EW	120-130	48	Frost Econ-o-watt Extended Service Ratings @ 120V =49W	C, CC-6			4 1/8	2000 3400		660 570
57	A19	Med.*	21497-3	▲	57A 12/4	120	48	Frost	C, CC-6			4 1/8	1000		850
			21464-3		57A 120/1 PRO	130	120	Frost ProPack	C, CC-6			4 1/8	1000		850
			21448-6	▲	57A	120	48	Frost	C, CC-6			4 1/8	1000		850
			21466-8	▲	57A	130	48	Frost	C, CC-6			4 1/8	1000		850
			21463-5	▲	57A/CL	130	48	Clear	C, CC-6			4 1/8	1000		850
			21465-0		57A/CL 120/1 PRO	130	120	Clear ProPack	C, CC-6			4 1/8	1000		920
			21452-8	▲	57A/CL/LL/TP 12/2	120	24	Clear Long Life	C, CC-6			4 1/8	1500		810
			21449-4	▲	57A/W/TP 24/4	120	96	Soft White	C, CC-6			4 1/8	1000		780
			21498-1	▲	57A/W/TP 12/4	120	48	Soft White	C, CC-6			4 1/8	1000		780
			21451-0	▲	57A/WL 24/4	120	96	Soft White Longer Life	C, CC-6			4 1/8	1500		750
			21499-9	▲	57A/WL 12/4 TP	120	48	Soft White Longer Life	C, CC-6			4 1/8	1500		750
						21500-4	▲	57A/WL 120/4 TP	120	480	Soft White Longer Life	C, CC-6		4 1/8	1500

For the most current product information, go to the e-catalog on [www.philips.com](http://www.philips.com)  
Incandescent symbols and footnotes located on page 149



ER30  
Med.



PAR36  
M.P.



R20  
Med.



A21 Med.  
3-Way



A19  
Med.



# INCANDESCENT LAMPS

Watts	Bulb	Base	Product Number	Symbols, Footnotes	Ordering Code	Volts	Pkg. Qty.‡	Description	Class Filament	LCL (In.)	MOL (In.)	Rated Avg. Life (Hrs.)(93)	Approx. MBCP*	Lumens
-------	------	------	----------------	--------------------	---------------	-------	------------	-------------	----------------	-----------	-----------	----------------------------	---------------	--------

## INCANDESCENT LAMPS (BY WATTAGE) CONTINUED

65	BR30	Med.	24876-5	▲✓(87)	65BR30/FL55 12/I	120	12	Reflector Flood	C,CC-6		5½	2000		635
			24884-9	▲✓(87)	65BR30/FL55	130	12	Reflector Flood	C,CC-6		5½	2000		635
			20191-3	▲✓(87)	65BR30/FL55/TG 12/I	130	12	TuffGuard Coated Reflector Flood	C,CC-6		5½	2000		635
			20190-5	▲✓(87)	65BR30/FL55/TG 12/I	120	12	TuffGuard Coated Reflector Flood	C,CC-6		5½	2000		635
			24880-7	▲(87)	65BR30/SP20	130	12	Reflector Spot	C,CC-6		5½	2000		655
			24452-5	(87)	65BR30/SFL	120	12	Reflector Sign Frost	C,C-17A		5½	5000		635
			13785-1	▲(87)	65BR30/FL/NTL 12/I	120	12	Natural Light Reflector	C,CC-6		5½	2000		500
			16768-4	▲(87)	65BR30/FL55/LL 12/I	120	12	Long Life Reflector Flood	C,CC-6		5½	2500	510	595
			16769-2	▲(87)	65BR30/SP20/LL 12/I	120	12	Long Life Reflector Spot	C,CC-6		5½	2500	530	610
			14007-9	(87)	65BR30/FL 12/I PRO	130	12	ProPack Reflector	C,CC-6		5½	2000		635
			29380-3		65BR30/FL55 SP 12/I	120-130	12	Surge Proof Reflector Ratings @ 130V = 69W	C,CC-6		5½	3000		570
												2000		660
				BR40	Med.	22537-5	▲✓(87)	65BR/FL60	130	24	Reflector Flood	C,CC-6		6½
14008-7	(87)	65BR40/FL 12/I PRO				130	12	ProPack Reflector	C,CC-6		6½	2000		600
16741-1	▲(87)	65BR/FL60/LL 8/I				120	8	Long Life Reflector Flood	C,CC-6		6½	2500	500	630
38913-0	▲(87)	65BR/FL60 24/I				120	24	Long Life Reflector Flood	C,CC-6		6½	2000	500	630
67	A19	Med.	22240-6	▲✓\$	75A-67A/EW	120	48	Frost Econ-o-watt	C,CC-6		4½	750		1010
			22241-4	▲✓\$	75A-67A/EW	130	48	Frost Econ-o-watt Ratings @ 120V =59W	C,CC-6		4½	750		990
			15000-3	▲\$	75A-67A/99/EW	120-130	48	Frost Econ-o-watt Extended Service Ratings @ 120V =63W	C,CC-6		4½	2000		970
											3400		840	
71	A19	Med.*	21469-2	▲	71A	130	48	Frost	C,CC-6		4½	750		1135
			21454-4	▲	71A	120	48	Frost	C,CC-6		4½	750		1135
			21470-0	▲	71A/CL	130	48	Clear	C,CC-6		4½	750		1135
			21455-1	▲	71A/CLLL 120V 12/2/WPTP	120	48	Clear Long Life	C,CC-6		4½	1125		1050
			21453-6	▲	71A/W/TP 24/4	120	96	Soft White	C,CC-6		4½	750		1050
			21501-2	▲	71A/W/TP 12/4	120	48	Soft White	C,CC-6		4½	750		1050
			21502-0	▲	71A/WL 24/4	120	96	Soft White Long Life	C,CC-6		4½	1125		
			21503-8	▲	71A/WL /TP 12/4	120	48	Soft White Long Life	C,CC-6		4½	1125		

For the most current product information, go to the e-catalog on [www.philips.com](http://www.philips.com)  
Incandescent symbols and footnotes located on page 149



# INCANDESCENT LAMPS

Watts	Bulb	Base	Product Number	Symbols, Footnotes	Ordering Code	Volts	Pkg. Qty.‡	Description	Class Filament	LCL (In.)	MOL (In.)	Rated Avg. Life (Hrs.)(93)	Approx. MBCP* Lumens	
75	A19	Med. ++	37472-8	▲ ✓	75A	120	48	Frost	C, CC-6		4 7/8	750	1220	
		Med.	20195-4	▲ ✓	75A/TG	120	48	TuffGuard Coated Lamp	C, CC-6		4 7/8	750	1220	
		Med.	15933-5	▲ ✓	75A/TG	130	48	TuffGuard Coated Lamp	C, CC-6		4 7/8	750	1220	
		Med. ++	13997-1		75A 120/I PRO	130	120	Frost ProPack Lamp	C, CC-6		4 7/8	750	1150	
		Med. ++	16801-3	▲	75A/CL/LL 12/2	120	24	Clear Long Life	C, CC-6		4 7/8	1500	1080	
		Med. ++	13996-3		75A/CL 120/I PRO	130	120	Clear ProPack Lamp	C, CC-6		4 7/8	750	1195	
		Med. ++	16879-9	▲	75A/WL 12/4	120	48	Soft White Long Life	C, CC-6		4 7/8	1500	1060	
		Med. ++	16739-5	▲	75A/WL 24/4	120	96	Soft White Long Life	C, CC-6		4 7/8	1500	1060	
		Med.	13560-8	▲	75A/NTL 12/4	120	48	Natural Light Standard	C, CC-6		4 7/8	750	950	
		Med. ++	27083-5	▲ ✓	75A 12/4	120	48	Frost	C, CC-6		4 7/8	750	1220	
		Med. ++	37473-6	▲	75A	130	48	Frost	C, CC-6		4 7/8	750	1150	
									Ratings @ 120V =66W				2120	860
		Med. ++	37406-6	▲ ✓	75A/99	120-130	48	Frost Extended Svc.	C, CC-6		4 7/8	2500	1070	
									Ratings @ 120V =70W				4250	930
		Med.	29360-5	▲	75A/RS/VS	120-130	12	Clear Rough & Vib. Svc.	R, C-9	2 1/2	3 5/8	1000	712	
									Ratings @ 120V =70W				1700	660
		Med.	20192-1	▲	75A/RS/WTG	120-130	12	TuffGuard Frost Rough & Vib. Svc.	R, C-9	2 1/2	3 5/8	1000	712	
									Ratings @ 120V =70W				1700	660
		Med. ++	37525-3	▲	75A/CL	130	48	Clear	C, CC-6	3 3/8	4 7/8	750	1195	
									Ratings @ 120V =66W				2140	885
Med. ++	37485-0	▲ ✓	75A/W 12/4	120	48	Soft White	C, CC-6		4 7/8	750	1180			
Med. ++	14997-0	▲ ✓	75A/W 12/4	130	48	Soft White	C, CC-6		4 7/8	1000	1100			
Med. ++	37486-8	▲	75A/W/TP 24/4	120	96	Soft White Tra-Pak	C, CC-6		4 7/8	750	1180			
A21	Med. ++	31305-6	▲	75A21	120-130	120	Frost	C, C-9		5 3/8	1000	1110		
											2854	858		
		Med.	20922-1	▲ (66)	75A/RH/TF 12/1	120-130	12	Frost Silicone Coated Tough Bulb	C, RC-9		5 3/8	1000		
		Med.	20470-1	▲	75A/RH 12/1	120-130	12	Frost Rough House	C, RC-9		5 3/8	1000	750	
												1700	730	
Med.	20018-8	▲	75A/RH/TG	120-130	12	TuffGuard Frost Rough House	C, RC-9		5 3/8	1000	750			
											1700	730		
Med.	14345-3	▲	75A21	12	60	Frost	C, C-6		5 3/8	1000	1100			
BR30	Med.	24903-7	▲ (66,87)	75BR30/FL/TF	120	12	Frost Silicone Coated Reflector	C, CC-6		5 3/8	2000			
		24905-2	▲ (87)	75BR30/AGRO 6/1	120	6	Agro-Lite Plant Light	C, CC-6		5 3/8	2000	700		
		24902-9	▲ (87)	75BR30/PK 8/1	120	8	Pink	C, CC-6		5 3/8	2000			
R20	Med.	16763-5	▲ ✕ □ (87)	75R20/LL 12/1	120	12	Frost Long Life Reflector	C, CC-6		3 5/8	2500	800		

For the most current product information, go to the e-catalog on [www.philips.com](http://www.philips.com)  
Incandescent symbols and footnotes located on page 149



## INCANDESCENT LAMPS

Watts	Bulb	Base	Product Number	Symbols, Footnotes	Ordering Code	Volts	Pkg. Qty.‡	Description	Class Filament	LCL (In.)	MOL (In.)	Rated Avg. Life (Hrs.)(93)	Approx. MBCP*	Lumens
85	BR30	Med.	16766-8	▲ X (87)	85BR30/FL55/LL 6/I	120	6	Long Life Reflector Flood	C, CC-6		5/8	2500	700	855
			16767-6	▲ X (87)	85BR30/SP20/LL 6/I	120	6	Long Life Reflector Spot	C, CC-6		5/8	2500	3100	865
	BR40	Med.	22527-6	▲ X ✓ (87)	85BR/FL60	120	24	Reflector Flood	C, CC-6		6/8	2000		925
			22528-4	▲ X ✓ (87)	85BR/FL60	130	24	Reflector Flood	C, CC-6		6/8	2000		925
			16785-8	▲ X (87)	85BR/FL60/LL 8/I	120	8	Long Life Reflector Flood	C, CC-6		6/8	2500	700	900
90	A19	Med.	22243-0	▲ ✓ \$	100A-90A/EW	120	48	Frost Econ-o-watt	C, CC-6		4/8	750		1445
			22244-8	▲ ✓ \$	100A-90A/EW	130	48	Frost Econ-o-watt	C, CC-6		4/8	750		1525
			15001-1	▲ \$	100A-90A/99EW	120-130	48	Frost Econ-o-watt Extended Service Ratings @ 120V =84W	C, CC-6		4/8	1500		1400
95	A19	Med.*	21459-3	▲ X	95A	120	48	Frost	C, CC-6		4/8	750		1600
			21474-2	▲ X	95A	130	48	Frost	C, CC-6		4/8	750		1600
			21473-4	▲ X	95A/CL	130	48	Frost	C, CC-6		4/8	750		1600
			21504-6	▲ X	95A/W/TP 12/4	120	48	Soft White	C, CC-6		4/8	750		1550
			21460-1	▲ X	95A/W 24/4	120	96	Soft White	C, CC-6		4/8	750		1550
			21818-0	▲ X	95A/WL 12/4	120	48	Soft White Long Life	C, CC-6		4/8	1125		1500
			21461-9	▲ X	95A/WL 24/4	120	96	Soft White Long Life	C, CC-6		4/8	1125		1500
100	A19	Med. ++	37474-4	▲ ✓	100A	120	48	Frost	C, CC-6		4/8	750		1600
			13684-6	▲ ✓	100A	120	48	Frost	C, CC-8		4/8	750		1710
			37476-9	▲ ✓	100A	130	48	Frost Ratings @ 120V =88W	C, CC-6		4/8	750		1590
		Med.	15934-3	▲ ✓	100A/TG	130	48	Frost	C, CC-6		4/8	750		1590
			13999-7	✓	100A 120/I PRO	130	120	Frost ProPack Lamp	C, CC-6		4/8	750		1590
			22979-9	▲ ✓	100A/99	130	48	Frost Extended Service Ratings @ 120V =88W	C, CC-6		4/8	2500		1470
		Med. ++	37527-9	▲	100A/CL	130	48	Clear Ratings @ 120V =88W	C, CC-6	3/8	4/8	750		1590
			13998-9		100A/CL 120/I PRO	130	120	Clear ProPack Lamp	C, CC-6	3/8	4/8	750		1615
		Med. ++	13254-8	▲ ✓	100A/W 12/4	120	48	Soft White	C, CC-6		4/8	750		1620
			13561-6	▲	100A/NTL 12/4	120	48	Natural Light Standard	C, CC-6		4/8	750		1350
		Med.	15130-8		100A/NTL/2XL 12/4	120	48	Natural Light Standard	C, CC-6		4/8	1500		1,210
			15008-6	▲	100A/CL/LL 12/2	120	24	Clear Long Life	C, CC-6		4/8	1500		1440
		Med. ++	16740-3	▲	100A/WL 24/4	120	96	Soft White Long Life	C, CC-8		4/8	1500		1440
			13255-5	▲	100A/W/TP 24/4	120	96	Soft White Tra-Pak	C, CC-6		4/8	750		1620
		Med.	22581-3	▲ ✓ □	100A/YL 12/2	120	24	Bug-A-Way Yellow Longer Life	C, CC-6		4/8	1350		
Med. ++	16862-5	▲	100A/WL 12/4	120	48	Soft White Long Life	C, CC-6		4/8	1500		1440		

For the most current product information, go to the e-catalog on [www.philips.com](http://www.philips.com)  
Incandescent symbols and footnotes located on page 149





# INCANDESCENT LAMPS

Watts	Bulb	Base	Product Number	Symbols, Footnotes	Ordering Code	Volts	Pkg. Qty.†	Description	Class Filament	LCL (In.)	MOL (In.)	Rated Avg. Life (Hrs.)(93)	Approx. MBCP* Lumens		
100	A21	Med.	14346-1	▲	100A	12	60	Frost	C, C-6		5%	1000	2050		
			28171-7	▲	100A21	120-130	120	60	Frost	C, CC-8		5%	750	1680	
										Ratings @ 120V =94W				1280	1463
			20197-0	▲	100A21/TG	120/1	120-130	120	60	TuffGuard Coated Lamp	C, CC-8		5%	750	1680
			14981-5	▲ (66)	100A21/TF		120	120	60	Frost Silicone Coated	C, CC-8		5%	750	
			29955-2	▲	100A		250	120	60	Frost	C, C-9		5%	1000	1180
			24661-1	▲	100A		277	120	60	Frost Mine	C, C-9		5%	1000	1070
			37460-3	▲	100A21/99		120-130	60	60	Frost Extended Service	C, C-9		5%	2500	1410
										Ratings @ 120V =94W				4250	1225
			20198-8	▲	100A21/99/TG	60/1	120-130	60	60	TuffGuard Coated Lamp	C, CC-8		5%	2500	1475
			14340-4	▲	100A/D		120	60	60	Frost Daylight	C, C-9		5%	750	900
			14400-6	▲ (43,64)	100A/1SBI		120	120	60	Frost Silvered Bowl	C, C-9		5%	1000	1150
			14971-6	▲ (66)	100A/RS/TF		120-130	60	60	Frost Silicone Coated	C, RC-9		5%	1000	
										Rough Service					
			27550-3	▲	100A/RS		250	60	60	Frost Rough Service	C, RC-9		5%	1000	1030
			37411-6	□	100A21/35		120-130	60	60	Frost Industrial Service	C, C-9		5%	3500	1175
										Ratings @ 120V =94W				5975	1015
			14967-4	□ (14, 66)	100A21/35/TF		120	60	60	Frost Silicone Coated Industrial Svc.	C, C-9		5%	3500	
			15927-7		100A/RS/VS/BR/TG		120-130	60	60	TuffGuard Frost Rough & Vibration Svc.	C, RC-9		5%	1000	1230
										Ratings @ 120V =94W				1700	945
22390-9	(12)	100A21/TS		130	120	120	Clear-Traffic Signal	C, C-9	2 1/8	4%	2000	1180			
A23	Med. ++	22430-3	▲	100A23	120	120	60	Frost	C, CC-6		6%	750	1730		
F20	Med.	16844-3		100F20/POSTLT/CL/LL 6/1	120	6	6	Clear Long Life PostLight	C, C-9		5%	4000	1250		
BR38	Med.	38532-8	(29, 82)	100PAR/1/B 6/1	120	6	6	Blue PAR	C, CC-6		5%	2000			
		38530-2	(29, 82)	100PAR/1/G 6/1	120	6	6	Green PAR	C, CC-6		5%	2000			
		38529-4	(29, 82)	100PAR/1/R 6/1	120	6	6	Red PAR	C, CC-6		5%	2000			
		38766-2	(29, 82)	100PAR/1/Y 6/1	120	6	6	Yellow PAR	C, CC-6		5%	2000			
		13127-6		100PAR/1/CL SRS 12/1	130	12	12	Clear PAR	C, CC-6		5%	2000			
		15923-6		100PAR/1/CL/TG 12/1	130	12	12	TuffGuard Coated Lamp	C, CC-6		5%	2000			
		14550-8	(29, 82)	100PAR38/HEAT/CL	120	12	12	Clear PAR Infrared	C, C-9		5%	5000			
K19	Med.	22491-5	▲ □	100K19/DL 6/2	120	12	12	Director	C, CC-6		4%	1150	1450		
R20	Med.	14174-7	■	100R20/FL/S	12	60	60	Clear Reflector Flood Swimming Pool	C, C-6		3%	2000	1000		
		16701-5	▲ □ X (82)	100R20/LL 12/1	120	12	12	Frost Long Life Reflector	C, CC-6		3%	2500	935		
100 200 300	PS25	3 Ct. Mog.	36734-2	▲ (8)	100/300/W 12/1	120	12	Soft White 3-Way	C, 2CC-6		6 1/3%	1200	1320		
													3300		
													4620		
116	A21	Med. +	22483-2	(12)	116A21/TS	120	120	Traffic Signal Clear	C, C-9	2 1/8	4%	8000	1180		
			22485-7	(12)	116A21/TS	130	120	Traffic Signal Clear	C, C-9	2 1/8	4%	8000	1180		

For the most current product information, go to the e-catalog on [www.philips.com](http://www.philips.com)  
Incandescent symbols and footnotes located on page 149



# INCANDESCENT LAMPS

Watts	Bulb	Base	Product Number	Symbols, Footnotes	Ordering Code	Volts	Pkg. Qty.‡	Description	Class Filament	LCL (In.)	MOL (In.)	Rated Avg. Life (Hrs.)(93)	Approx. MBCP*	Lumens
-------	------	------	----------------	--------------------	---------------	-------	------------	-------------	----------------	-----------	-----------	----------------------------	---------------	--------

## INCANDESCENT LAMPS (BY WATTAGE) CONTINUED

120	BR40	Med.	22541-7	▲ X ✓ (87)	I20BR/FL60	120	24	Reflector Flood	C, CC-6		6 1/2	2000		1300
		Med.	22532-6	▲ X ✓ (87)	I20BR/FL60	130	24	Reflector Flood	C, CC-6		6 1/2	2000		1300
		Med.	20199-6	▲ ✓ (87)	I20BR/FL60/TG 24/I	130	24	TuffGuard Coated Reflector Flood	C, CC-6		6 1/2	2000		1300
		Med.	20200-2	▲ ✓ (87)	I20BR/FL60/TG CDA 24/I	120	24	TuffGuard Coated Reflector Flood	C, CC-6		6 1/2	2000		1300
		Med.	22544-1	▲ X (87)	I20BR/SP20	120-130	24	Reflector Spot	C, CC-6		6 1/2	2000		1300
		Med.	16779-1	▲ X (87)	I20BR/FL60/LL 8/I	120	8	Long Life Reflector Flood	C, CC-6		6 1/2	2500	1000	1285
		Med.	16781-7	▲ X (87)	I20BR/SP20/LL 8/I	120	8	Long Life Reflector Spot	C, CC-6		6 1/2	2500	4600	1225
		Med.	16715-5	▲ (87)	I20BR/Agro 6/I	120	6	Agro-Lite Plant Light	C, CC-6		6 1/2	2000		
		Med.	14012-9	X (87)	I20BR/FL 12/I PRO	130	12	ProPack Reflector	C, CC-6		6 1/2	2000		1300
		ER40	Med.	13928-7	▲ X \$	I20ER40	120-130	24	Elliptical Reflector	C, CC-6		7 1/2	2000	
125	BR40	Med.	15930-1	▲ (27,87,89)	I25BR40/1/TG 4/I	120	4	TuffGuard Coated Clear Reflector Infrared	C, C-9		6 1/2	5000		
135	A21	Med.	28175-8	▲ \$	I50A-135A/EW	120-130	60	Frost Econ-o-watt Ratings @ 120V=127W	C, CC-8		5 1/2	750		2490
			15002-9	▲ \$	I50A-135A/99/EW	120-130	60	Frost Econ-o-watt Ratings @ 120V=119W	C, CC-8		5 1/2	1000		2300
			37616-0	(12)	K135A21/TS/EW	120-125	120	Clear Krypton Econ-o-watt Traffic Signal	C, C-11V	3	4 1/2	8000		1750
	A25	Med.	26836-7	X \$ □	I35A25/35	130	60	Frost Econ-o-watt Industrial Svc. Ratings @ 120V=119W	C, C-9		6 1/2	3500	9987	1865
150	A21	Med.	27003-3	▲ ✓	I50A	120	48	Frost	C, C-9		5 1/2	750		2700
		Med.	27069-4	▲ ✓	I50A	130	48	Frost Ratings @120V=133W	C, CC-8		5 1/2	750		2700
			37417-3	▲ ✓ X (82)	I50A/99	120-130	60	Frost Extended Service Ratings @120V=141W	C, C-9		5 1/2	2500		2200
			37418-1	▲ (82)	I50A/CL	120-130	60	Clear Ratings @120V=141W	C, CC-8	3 1/2	5 1/2	750		2700
			14969-0	▲ (66)	I50A21/RS/TF	120-130	60	High-Temp. Coating	C, RC-9		5 1/2	1000		
			15009-4	▲	I50A/CL/LL 12/I TP	120	12	Clear Long Life	C, CC-8		5 1/2	1500		2000
			16866-6	▲	I50A/WL 12/I	120	12	Soft White Long Life	C, CC-8		5 1/2	2000		2310
			27578-4	▲	I50A21/RS/BR	120-130	60	Frost Rough & Vibration Service Ratings @120V=141W	C, RC-9		5 1/2	1000		2205
			27586-7	▲	I50A21/CL/RS/VS	120-130	60	Clear Rough & Vibration Service Ratings @120V=141W	C, RC-9	3 1/2	5 1/2	1000		2200
			27588-3	▲	I50A/35/RS/BR	120-130	60	Frost Industrial Rough Service Ratings @120V=141W	C, RC-9	3 1/2	5 1/2	3500		1640
	15931-9	▲	I50A/35RS/BR/TG	120-130	60	Frost Industrial Rough Service Ratings @120V=141W	C, RC-9	3 1/2	5 1/2	3500		1640		

For the most current product information, go to the e-catalog on [www.philips.com](http://www.philips.com)  
Incandescent symbols and footnotes located on page 149



# INCANDESCENT LAMPS

Watts	Bulb	Base	Product Number	Symbols, Footnotes	Ordering Code	Volts	Pkg. Qty.:	Description	Class Filament	LCL (In.)	MOL (In.)	Rated Avg. Life (Hrs.)(93)	Approx. MBCP*	Lumens
150	A23	Med. LHT	28170-9	(18) X	150A23/LHT	120-	60	Frost	C, CC-8		6%	750		2700
	A23	Med.	28172-5	▲	150A23	120-	60	Frost	C, CC-8	4%	6%	750		2700
			37419-9	▲	150A23/CL	120-	60	Clear Ratings @120V=141W	C, CC-8	4%	6%	750 1275		2700 2300
	A25	Med.	37421-5	□	150A25/35	120-	60	Frost Industrial Service Ratings @120V=141W	C, C-9		6%	3500 5975		1715 1500
			14961-7	□ (14,66)	150A25/35/TF	120	60	Frost Silicone Coated Industrial Svc.	C, C-9		6%	3500		
	BR40	Med.	22725-6	▲ (87)	150BR/AGRO 6/1	120	6	Agro-Lite Plant Light	C, CC-6		6%	2000		
	BR38	Med.	38568-2		150BR38/5FL	130	12	Flood Anti-Vibration	C, C-11V		5%	5000		
			20203-6		150BR38/FL/TG 6/1	130	6	TuffGuard Coated Lamp	C, CC-6		5%	2000		1650
	PS25	Med.	28173-3	▲	150	120-	60	Frost Ratings @120V=141W	C, C-9		6%	750 1280		2460 2143
			28174-1	▲	150PS25/99	120-	60	Frost Extended Service Ratings @120V=141W	C, C-9		6%	2500 4250		1950 1690
			14983-1	▲ (66)	150PS25/TF	120	60	Frost Silicone Coated	C, C-9		6%	1000		
			24684-3	▲	150PS25/99CL	250	60	Clear Extended Service	C, CC-9		6%	2500		1840
	175	PAR38	Med. Skt.	14551-6	(27,89)	175PAR38/HEAT/CL	120	12	Clear Infrared	C, C-9		5%	5000	
			36403-4	(27,89)	IR175PAR	120	15	Clear Infrared	C, C-9		5%	5000		
			20838-9	(27,89)	IR175PAR	120	12	Clear Infrared	C, C-9		5%	5000		

For the most current product information, go to the e-catalog on [www.philips.com](http://www.philips.com)  
Incandescent symbols and footnotes located on page 149



# INCANDESCENT LAMPS

Watts	Bulb	Base	Product Number	Symbols, Footnotes	Ordering Code	Volts	Pkg. Qty.‡	Description	Class Filament	LCL (In.)	MOL (In.)	Rated Avg. Life (Hrs.)(93)	Approx. MBCP*	Lumens
200	A21	Med.	16867-4	▲	200A/WL 6/I	120	6	Soft White Long Life	C, CC-2V		5%	1500		3100
	A23	Med.	16798-0	▲	200A/CL/LL 6/I	120	6	Clear Long Life	C, CC-8		6%	1500		3665
			36289-7	▲	200A	120	60	Frost	C, CC-8		6%	750		3800
			36291-3	▲	200A	130	60	Frost	C, CC-2V		6%	750		3600
									Ratings @ 120V=176W			2120		2700
			37427-2	▲	200A/CL	120-130	60	Clear	C, CC-2V	4%	6%	750		3600
									Ratings @ 120V=187W			1275		3130
			28176-6	▲	200A/99	120-130	60	Frost Extended Service	C, CC-2V		6%	2500		3250
									Ratings @ 120V=187W			4250		2830
			20204-4	▲	200A/99/TG 60/I	120-130	60	TuffGuard Coated Lamp Frost	C, CC-8		6%	2500		3500
			32383-2	▲	200A/99/CL	130	60	Clear	C, CC-8		6%	2500		3100
	A25	Med.	39813-1	□	200A25/35	130	60	Frost Industrial Service	C, C-9		6%	3500		2690
									Ratings @ 120V=177W			9987		2052
	PAR56	Mog. End Prong	28956-1	(9,59,90)	200PAR56/MFL	120	8	PAR Med. Flood	C, CC-13		5	2000		
	PS25	Med.	34974-6	▲	200/IF	250	60	Frost	C, CC-9		6%	1000		2900
			34976-1	▲	200	277	60	Clear—Mine	C, CC-9	5%	6%	1000		2540
	PS30	Med.	14301-6	▲	200	120-130	60	Clear	C, C-9		8%	750		3250
									Ratings @ 120V=177W			2120		2470
			14299-1	▲	200/IF	120-130	12	Clear	C, C-9		8%	750		3200
									Ratings @ 120V=177W			2120		2430
			14298-3	▲ (66)	200/TF	120	60	Frost Silicone Coated	C, C-9		8%	750		2980
			14297-5	▲	200/99IF	120-130	60	Frost	C, C-9		8%	750		2600
									Ratings @ 120V=177W			2140		1975
			14304-0	▲	200PS30/23	120-130	60	Frost	C, C-9		8%	1000		2800
									Ratings @ 120V=177W			2830		2130
			14303-2	▲	200PS30/24	120-130	60	Clear Rough Service	C, C-9		8%	1000		2900
									Ratings @ 120V=177W			2830		2205
			14305-7	▲ (66)	200PS30/RS/TF	120-130	60	Frost Rough Service Silicone Coated	C, C-9		8%	1000		2715
												2830		2065
			20472-7	▲ (66)	200PS30/RS/TG	120-130	60	TuffGuard Frost Rough Service	C, C-9		8%	1000		
			14302-4	▲	200PS30/RS	250	60	Clear Rough Service	C, C-9		8%	1000		2600
			14300-8		200/35/TF	120	60	Frost Silicone Coated Industrial Svc.	C, C-9		8%	3500		2570
PS30	Mog.	14296-7		200PS30/12	130	60	Clear	C, C-9	6%	8%	750		3250	
								Ratings @ 120V=177W			2140		2785	

For the most current product information, go to the e-catalog on [www.philips.com](http://www.philips.com)  
Incandescent symbols and footnotes located on page 149



# INCANDESCENT LAMPS

Watts	Bulb	Base	Product Number	Symbols, Footnotes	Ordering Code	Volts	Pkg. Qty.‡	Description	Class Filament	LCL (In.)	MOL (In.)	Rated Avg. Life (Hrs.)(93)	Approx. MBCP*	Lumens
250	BR40	Med.	38932-0	▲ (27, 87)	250BR40/I 4/I	120	4	Clear Reflector Infrared	C, C-9		6½	5000		
			20205-1	▲ (27, 87)	250BR40/I/TG 4/I	120	4	TuffGuard Coated Clr. Ref. Infrared	C, C-9		6½	5000		
			14011-1	▲ (27, 87)	250BR40/I 12/I PRO	130	12	ProPack Clear Reflector Infrared	C, C-9		6½	5000		1600
	PAR38	Med. Skt.	37432-2	□ (53, 82)	K250PAR38/FL	120-130	12	PAR Floodlight (Krypton)	C, CC-6		5%	4000	5000	3100
			37433-0	□ (53, 82)	K250PAR38/SP	120-130	12	PAR Spotlight (Krypton)	C, CC-6		5%	4000		3100
	R40	Med.	38933-8	▲\$ (27,87,89)	250R40/HR 4/I	120	4	Red Bowl Heat Ray	C, C-9		6%	5000		
15932-7			▲\$ (27,87,89)	250R40/HR/TG 4/I	120	4	TuffGuard Ctd. Red Bowl Heat Ray	C, C-9		6%	5000			
300	BR40	Med.	14343-8	▲\$ (87)	300BR/FL	120-130	24	Reflector Flood	C, CC-11		6½	2000		2480
			PAR56	Mog. End Prong	23382-5		300PAR56/MFL	120	8	PAR Med. Flood	C, CC-13		5	2000
	23405-4	(9, 55)			300PAR56/MFL	130	8	PAR Med. Flood	C, CC-13		5	2000		
	23388-2	(9, 55)			300PAR56/WFL	120	8	PAR Wide Flood	C, CC-13		5	2000		
	23410-4	(9, 55)			300PAR56/WFL	130	8	PAR Wide Flood	C, CC-13		5	2000		
	23378-3	(9, 46, 55)			300PAR56/NSP	120	8	PAR Narrow Spotlight	C, CC-13		5	2000		
	PS25	Med.	28177-4	▲	300M/IF	120-130	60	Frost	C, CC-8		6½%	750		6230
												1280		5471
			38941-1	▲	300M/IF	120	6	Frost	C, CC-8		6½%	750		6300
			20206-9	▲	300M/99IF/TG	120/130	60	TuffGuard Frost Coated Lamp	C, CC-8		6½%	2500		5060
			13391-8	▲	300M	120-130	12	Clear	C, CC-8	5¼	6½%	750		6280
												2120		4625
			35008-2	▲	300M/99IF	120	60	Frost Extended Service	C, CC-8		6½%	2500		4044
			35009-0	▲	300M/99IF	130	60	Frost Extended Service	C, CC-8		6½%	2500		506
												7130		4044
			35007-4	▲	300M/99	130	60	Clear Extended Service	C, CC-8	5¼	6½%	2500		5300
										7134		4044		
	PS30	Med.	14307-3	▲	300M/PS30IF	120-130	60	Frost	C, C-9		8½%	750		5000
											2120		3800	
			14306-5	▲	300M/PS30	120-130	60	Clear	C, C-9		8½%	750		5000
										2120		3800		
20207-7	▲	300M/PS30/IF/TG	120-130	60	TuffGuard Coated Lamp Frost	C, C-9		8½%	750		5000			
									2120		3800			
14294-3		300M/PS30/35	120-130	60	Frost Industrial Service	C, C-9		8½%	3500		3800			
									9900		2885			

For the most current product information, go to the e-catalog on [www.philips.com](http://www.philips.com)  
Incandescent symbols and footnotes located on page 149



BR40  
Med.



PAR38  
Med. Skt.



R40  
Med.



PAR56  
Mog. End Prong



PS25  
Med.



PS30  
Med.

# INCANDESCENT LAMPS

Watts	Bulb	Base	Product Number	Symbols, Footnotes	Ordering Code	Volts	Pkg. Qty.‡	Description	Class Filament	LCL (In.)	MOL (In.)	Rated Avg. Life (Hrs.)(93)	Approx. MBCP*	Lumens
300	PS35	Mog.	14320-6		300/RSIF	120	24	Frost Rough Service	C, C-9		9%	1000		5150
			14309-9		300/99IF	120–130	24	Frost Extended Service Ratings @ 120V=265W	C, C-9		9%	1000		4500 2830 3420
			14321-4		300/99	120–130	24	Clear Extended Service Ratings @ 120V=265W	C, C-9		9%	2500		4600 7134 3495
			14316-4		300/IF	120–130	12	Frost Ratings @ 120V=265W	C, C-9		9%	1000		4,600 2854 3495
			14314-9		300	120–130	24	Clear Ratings @ 120V=265W	C, C-9	7	9%	1000		4600 2854 3495
			14317-2		300	277	24	Clear	C, C-9	7	9%	1000		4000
			20474-3		300/IF/TG	120–130	12	TuffGuard Coated Lamp	C, C-9		9%	1000		
	R40	Med.	14432-9	■▲ (31,3751,53)	300R/FL/1	12	24	Reflector Flood Frost—Swimming Pool	C, C-2V		6%	2000		2960
			14429-5	■▲ (31,3751,53)	300R/FL/1	120–130	24	Reflector Flood—Swimming Pool	C, CC-11		6%	2000		2480
	R40	Mog.	14433-7	▲ (31,3751,53)	300R/3FL	120–130	24	Reflector Flood	CC-11		7%	2000		3600
375	BR40	Med. Skt.	14342-0	(19,31,37,87)	375BR40	120	24	Reflector Infrared Lt. Frost Industrial	C, C-7A		7%	5000		
	R40	Med. Skt.	14574-8	(19,31,37,87)	375R40/1	120	24	Clear Reflector Infrared Industrial	C, C-7A		7%	5000		

For the most current product information, go to the e-catalog on [www.philips.com](http://www.philips.com)  
Incandescent symbols and footnotes located on page 149



PS35  
Mog.



R40  
Med.



R40  
Mog.



BR40  
Med. Skt.



R40  
Med. Skt.

# INCANDESCENT LAMPS

Watts	Bulb	Base	Product Number	Symbols, Footnotes	Ordering Code	Volts	Pkg. Qty. #	Description	Class Filament	LCL (In.)	MOL (In.)	Rated Avg. Life (Hrs.)(93)	Approx. MBCP*	Lumens
400	G30	Med.	14461-8	(12, 22)	400G/FL	120-130	60	Clear Floodlight	C, C-7A	3	5%	800		6645
500	PAR64	Ext. Mog. End Prong	23417-9	(9, 55)	500PAR64/MFL	120	8	PAR Med. Flood	C, CC-13		6	2000		
			23416-1		500PAR64/NSP	120	8	PAR Narrow Spot	C, CC-13		6	2000		
	PS35	Mog.	14407-1		500	120-130	24	Clear Ratings @120V=442W	C, C-9	7	9%	1000		8900
			14313-1		500/IF	120-130	24	Frost Ratings @120V=442W	C, C-9		9%	1000		8700
			14319-8		500/99	120-130	24	Clear Extended Service Ratings @120V=442W	C, C-9	7	9%	2500		8100
			14318-0		500/99IF	120-130	24	Frost Extended Service Ratings @120V=442W	C, C-9		9%	2500		8000
			14327-1		500	277	24	Clear	C, C-9		9%	1000		7000
	R40	Med.	14430-3	■▲X (31, 37, 51, 53, 12)	500R/3FL/2S	130	24	Swimming Pool Ratings @120V=442W	C, C-7A		6%	2000		6120
	R40	Mog.	14434-5	▲ (51, 53)	500R/3FL	120-130	24	Frost Reflector Flood	CC-11		7%	2000		5000
			14435-2	▲ (51, 53)	500R/3FL	250	24	Frost Reflector Flood Special Svc.	C, C-7A		7%	2000		4700

For the most current product information, go to the e-catalog on [www.philips.com](http://www.philips.com)  
Incandescent symbols and footnotes located on page 149



# INCANDESCENT LAMPS

Watts	Bulb	Base	Product Number	Symbols, Footnotes	Ordering Code	Volts	Pkg. Qty.‡	Description	Class Filament	LCL (In.)	MOL (In.)	Rated Avg. Life (Hrs.)(93)	Approx. MBCP*	Lumens
-------	------	------	----------------	--------------------	---------------	-------	------------	-------------	----------------	-----------	-----------	----------------------------	---------------	--------

## INCANDESCENT LAMPS (BY WATTAGE) CONTINUED

620	PS40	Mog. Pf.	14323-0		620PS40P	120	24	Code Beacon	C, C-7A	5 1/8	10 1/8	3000		9000
-----	------	----------	---------	--	----------	-----	----	-------------	---------	-------	--------	------	--	------

## LAMPS LISTED BY LUMENS

1950L	P25	Med. +	14572-2		1950L/P25/TS	120	60	Traffic Signal	C, C-9	3	4 3/4	8000		1950
-------	-----	--------	---------	--	--------------	-----	----	----------------	--------	---	-------	------	--	------

## SPECIAL LIGHTING

Night Light Plug In			25139-7	(94)	BCPNL 4C7 12/1	120	12	Night Light Plug In	B, C-7A		2 1/2	3000		16
---------------------	--	--	---------	------	----------------	-----	----	---------------------	---------	--	-------	------	--	----

## STREET LIGHTING LAMPS, SERIES

6.6A	PS35	Mog.	14311-5		2500/66R	22.8	24	Clear Extended Service	C, C-2V	7	9 3/4	3000		
			14310-7		4M/66R	34	24	Clear Extended Service	C, C-2V	7	9 3/4	3000		

For the most current product information, go to the e-catalog on [www.philips.com](http://www.philips.com)  
Incandescent symbols and footnotes located on page 149





# INCANDESCENT LAMPS

## Decoratives

Watts	Bulb	Base	Product Number	Symbols, Footnotes	Ordering Code	Volts	Pkg. Qty.†	Description	Class Filament	LCL (In.)	MOL (In.)	Rated Avg. Life (Hrs.)(93)	Approx. MBCP*	Lumens
3	CA10	Cand.	16698-2	▲	BC3CA10C/CL/LL 6/1	120	6	Clear Long Life Flicker Flame	B, C-7A		4%	2000		
15	BA9	Cand.	16696-6	▲	BC15BA9C/CL/LL 6/4	120	24	Clear Long Life Bent Tip	B, CC-2V, C-7A		3%	2000		110
			16811-2	▲	BC15BA9C/CL/LL 6/2	120	12	Clear Long Life Bent Tip	B, CC-2V, C-7A		4%	2000		110
	F10	Cand.	16830-2	▲	BC15F10C/CL/LL 6/2	120	12	Clear Long Life Flame	B, C-7A		3%	2000		95
			16831-0	▲	BC15F10C/A/LL 6/2	120	12	Amber Long Life Flame	B, C-7A		3%	2000		85
25	BA9	Cand.	16719-7	▲	BC25BA9C/CL/LL 6/4	120	24	Clear Long Life Bent Tip	C, CC-2V, C-7A		4%	2000		150
			16806-2	▲	BC25BA9C/CL/LL 6/2	120	12	Clear Long Life Bent Tip	C, CC-2V, C-7A		4%	2000		150
			16810-4	▲	BC25BA9C/F/LL 6/2	120	12	Frost Long Life Bent Tip	C, CC-2V, C-7A		4%	2000		145
			13823-0	▲	BC25BA9C/CL 6/1 TP	120	6	Clear Bent Tip	C, CC-2V, C-7A		4%	2000		
	BA9½	Med.	16819-5	▲	BC25BA9½/CL/LL 6/2	120	12	Clear Long Life Bent Tip	C, CC-2V, C-7A		4%	2000		150
	B10½	Cand.	16824-5	▲	BC25B10½C/CL/LL 6/2	120	12	Clear Long Life Blunt Tip	C, CC-2V, C-7A		4%	2000		150
	B13	Med.	16827-8	▲	BC25B13/CL/LL 6/2	120	12	Clear Long Life Blunt Tip	C, C-7A		4%	2000		150
	CA8	Cand.	13568-1	▲	BC25CA8C/CL/LL 6/2	120	12	Clear Petite Long Life Bent Tip	C, CC-2V		3%	2000		220
	F10	Cand.	16832-8	▲	BC25F10C/CL/LL 6/2	120	12	Clear Long Life Flame	B, C-7A		3%	2000		105
	F15	Med.	16833-6	▲	BC25F15/CL/LL 6/2	120	12	Clear Long Life Flame	B, C-9		4%	2000		150
16839-3			▲	BC25F15/IR/LL 6/2	120	12	Iridescent Long Life Flame	C, C-9		4%	2000		150	
G16½	Cand.	16841-9	▲	BC25G16½/IR/LL 6/2	120	12	Amber Long Life Flame	B, C-9		4%	2000		130	
		16845-0	▲	BC25G16½C/CL/LL 6/2	120	12	Clear Long Life Globe	B, C-7A		3	2000		200	
		16847-6	▲	BC25G16½C/W/LL 6/2	120	12	White Long Life Globe	B, C-7A		3	2000		165	
	Med.	13535-0	▲	BC25G16½/CL/LL 6/2	120	12	Clear Long Life Globe	C, CC-2V		2%	2000		180	
		13534-3	▲	BC25G16½/W/LL 6/2	120	12	White Long Life Globe	C, CC-2V		2%	2000		160	
40	BA9	Cand.	16720-5	▲	BC40BA9C/CL/LL 6/4	120	24	Clear Long Life Bent Tip	C, CC-2V, C-7A		4%	2000		300
			16807-0	▲	BC40BA9C/CL/LL 6/2	120	12	Clear Long Life Bent Tip	C, CC-2V, C-7A		4%	2000		300
			16809-6	▲	BC40BA9C/F/LL 6/2	120	12	Frost Long Life Bent Tip	C, CC-2V, C-7A		4%	2000		295
	BA9½	Med.	16760-1	▲	BC40BA9½/CL/LL 6/4	120	24	Clear Long Life Bent Tip	C, CC-2V, C-7A		4%	2000		300
			16820-3	▲	BC40BA9½/CL/LL	120	12	Clear Long Life Bent Tip	C, CC-2V, C-7A		4%	2000		300
			16821-1	▲	BC40BA9½/F/	120	12	Frost Long Life Bent Tip	C, CC-2V, C-7A		4%	2000		295
	B10½	Cand.	16825-2	▲	BC40B10½C/CL/LL 6/2	120	12	Clear Long Life Blunt Tip	C, CC-2V		4%	2000		300
			14125-9	▲	BC40B10½C/N/LL 6/2	120	12	Natural Light Blunt Tip	C, CC-2V, C-7A		4%	2000		270
B13	Med.	16828-6	▲	BC40B13/CL/LL 6/2	120	12	Clear Long Life Blunt Tip	C, C-7A		4%	2000		300	
		14127-5	▲	BC40B13/N/LL 6/2	120	12	Natural Light Blunt Tip	C, CC-2V, C-7A		4%	2000		270	

For the most current product information, go to the e-catalog on [www.philips.com](http://www.philips.com)  
Incandescent symbols and footnotes located on page 149



CA10  
Cand.



BA9  
Cand.



F10  
Cand.



BA9½  
Med.



B10½  
Cand.



B13  
Med.



CA8  
Cand.



F15  
Med.



G16½  
Cand.



G16½  
Med.

# INCANDESCENT LAMPS

## Decoratives

Watts	Bulb	Base	Product Number	Symbols, Footnotes	Ordering Code	Volts	Pkg. Qty.‡	Description	Class Filament	LCL (In.)	MOL (In.)	Rated Avg. Life (Hrs.)(93)	Approx. MBCP*	Lumens
40	F15	Med.	16835-1	▲	BC40F15/CL/LL 6/2	120	12	Clear Long Life Flame	C, C-9		4 1/2	2000		385
			16837-7	▲	BC40F15/IR/LL 6/2	120	12	Iridescent Long Life Flame	C, C-9		4 1/2	2000		370
			16838-5	▲	BC40F15/W/LL 6/2	120	12	White Long Life Flame	C, C-9		4 1/2	2000		300
	G16 1/2	Cand.	16846-8	▲	BC40G16 1/2/C/LL 6/2	120	12	Clear Long Life Globe	C, CC-2V, C-7A		3	2000		300
			16848-4	▲	BC40G16 1/2/CW/LL 6/2	120	12	White Long Life Globe	C, CC-2V, C-7A		3	2000		245
			14129-1	▲	BC40G16 1/2/C/NL 6/2	120	12	Natural Light Globe	C, CC-2V, C-7A		3	2000		270
	G16 1/2	Med.	13537-6	▲	BC40G16 1/2/CL/LL 6/2	120	12	Clear Long Life Globe	C, CC-2V, C-7A		2 3/4	2000		300
			13536-8	▲	BC40G16 1/2/W/LL 6/2	120	12	White Long Life Globe	C, CC-2V, C-7A		2 3/4	2000		270
			14876-7	▲	BC40G16 1/2/IR/LL 6/2TP	120	12	Iridescent Long Life Globe	C, CC-2V, C-7A		2 3/4	2000		270
60	BA9	Cand.	16808-8	▲	BC60BA9C/CL 6/2	120	12	Clear Long Life Bent Tip	C, CC-2V, C-7A		4 1/8	2000		550
			16721-3	▲	BC60BA9C/CL/LL 6/4	120	24	Clear Long Life Bent Tip	C, CC-2V, C-7A		4 1/8	2000		550
			16805-4	▲	BC60BA9C/F/LL 6/2	120	12	Frost Long Life Bent Tip	C, CC-2V, C-7A		4 1/8	2000		545
	BA9 1/2	Med.	16822-9	▲	BC60BA9 1/2/CL/LL 6/2	120	12	Clear Long Life Bent Tip	C, CC-2V, C-7A		4 1/8	2000		550
			16823-7	▲	BC60BA9 1/2/F/LL 6/2	120	12	Frost Long Life Bent Tip	C, CC-2V, C-7A		4 1/8	2000		545
	B10 1/2	Cand.	16826-0	▲	BC60B10 1/2/C/CL/LL 6/2	120	12	Clear Long Life Blunt Tip	C, CC-2V		4 1/8	2000		550
	B13	Med.	16829-4	▲	BC60B13/CL/LL 6/2	120	12	Clear Long Life Blunt Tip	C, C-7A		4 1/8	2000		550
			14006-1		60B13/CL PRO	130	25	ProPack Clear Blunt Tip	C, C-7A		4 1/8	2000		550
	F15	Med.	16842-7	▲	BC60F15/CL/LL 6/2	120	12	Clear Long Life Flame	C, C-9		4 1/2	2000		630
			20471-9	▲	60F15/CL/TG 24/1	120	24	TuffGuard Coated Flame	C, C-9		4 1/2	2000		
	G16 1/2	Cand.	16699-0	▲	BC60G16 1/2/C/CL/LL 6/2	120	12	Clear Long Life Globe	C, CC-2V		3	2000		540
			16700-7	▲	BC60G16 1/2/CW/LL 6/2	120	12	White Long Life Globe	C, CC-2V		3	2000		450
G16 1/2	Med.	13538-4	▲	BC60G16 1/2/CL/LL 6/2	120	12	Clear Long Life Globe	C, CC-2V		2 3/4	2000		540	
		13530-1	▲	BC60G16 1/2/W/LL 6/2	120	12	White Long Life Globe	C, CC-2V		2 3/4	2000		420	
100	F20	Med.	16844-3	▲	100F20/POSTLT/CL/LL 6/1	120	6	Clear Long Life PostLight	C, C-9		5 1/2	4000		1250

For the most current product information, go to the e-catalog on [www.philips.com](http://www.philips.com)  
Incandescent symbols and footnotes located on page 149



# INCANDESCENT LAMPS

## Decoratives

Watts	Bulb	Base	Product Number	Symbols, Footnotes	Ordering Code	Volts	Pkg. Qty.‡	Description	Class Filament	LCL (In.)	MOL (In.)	Rated Avg. Life (Hrs.)(93)	Approx. MBCP*	Lumens
25	B10½	Cand.	14000-4		25B10-½C/CL PRO	130	25	ProPack Clear Blunt Tip	C, C-7A, CC-2V	4¾		2000		150
	BA9	Cand.	14003-8		25BA9C/CL PRO	130	25	ProPack Clear Bent Tip	C, C-7A, CC-2V	4¾		2000		150
			31090-4	▲	25BA9C	120	25	Clear Bent Tip	C, C-7A, CC-2V	4¾		4000		135
	G16½	Cand.	31133-2	▲	25G16-½C/4M	120	25	Clear Globe	C, C-7A		3		4000	
14013-7				25G16-½C/CL PRO	130	25	ProPack Clear Globe	C, C-7A		3		2000		200
40	BA9	Cand.	31093-8	▲	40BA9C/4M	120	25	Clear Bent Tip	C, C-7A, CC-2V	4¾		4000		270
			14004-6		40BA9C/CL PRO	130	25	ProPack Clear Bent Tip	C, C-7A, CC-2V	4¾		2000		300
	BA9½	Med.	14070-7		40BA9-½/CL PRO	130	25	ProPack Clear Bent Tip	C, C-7A, CC-2V	4¾		2000		300
			31115-9	▲	40B10-½C/4M	120	25	Clear Blunt Tip	C, C-7A	4¾		4000		270
	B10½	Cand.	14001-2		40B10-½C/CL PRO	130	25	ProPack Clear Blunt Tip	C, C-7A, CC-2V	4¾		2000		300
			G16½	Cand.	31134-0	▲	40G16-½C/4M	120	25	Clear Globe	C, C-7A, CC-2V	3		4000
14068-1		40G16-½C/CL PRO			130	25	ProPack Clear Globe	C, C-7A	3		2000		300	
60	BA9	Cand.	31095-3	▲	60BA9C/4M	120	25	Clear Bent Tip	C, C-7A, CC-2V	4¾		4000		530
			14005-3		60BA9C/CL PRO	120	25	ProPack Clear Bent Tip	C, C-7A, CC-2V	4¾		2000		550
	BA9½	Med.	31099-5	▲	60BA9-½/4M	120	25	Clear Bent Tip	C, C-7A	4¾		4000		530
	B10½	Cand.	31116-7	▲	60B10-½C/4M	120	25	Clear Blunt Tip	C, C-7A	4¾		4000		530
14002-0				60B10-½C/CL PRO	130	25	ProPack Clear Blunt Tip	C, C-7A	4¾		2000		550	

## DECORATIVES, ALL OTHERS

25	G25	Med.	16887-2	▲	25G25/CL/LL 12/1	120	12	Clear Long Life Globe	C, CC-6	4¾		2000		235
			16748-6	▲	25G25/W/LL 12/1	120	12	White Long Life Globe	C, CC-6	4¾		2000		210
			16901-1	▲	25G25/CL/LL 4/3	120	12	Clear Long Life Globe	C, CC-6	4¾		2000		235
			16902-9	▲	25G25/W/LL 4/3	120	12	White Long Life Globe	C, CC-6	4¾		2000		210
			14014-5		25G25/CL PRO	130	12	ProPack Clear Globe	C, CC-6	4¾		2000		200
40	G25	Med.	16702-3	▲	40G25/CT	120	6	Clear Chrome-Top Long Life Globe	C, C-9	4¾		2000		200
			16747-8	▲	40G25/CL/LL 12/1	120	12	Clear Long Life Globe	C, CC-6	4¾		2000		460
			25001-9	▲	40G25/W 120V 12/1	120	12	White Globe	C, CC-6	4¾		1500		370
			16746-0	▲	40G25/W/LL 12/1	120	12	White Long Life Globe	C, CC-6	4¾		2000		415
			16903-7	▲	40G25/CL/LL 4/3	120	12	Clear Long Life Globe	C, CC-6	4¾		2000		460
			16904-5	▲	40G25/W/LL 4/3	120	12	White Long Life Globe	C, CC-6	4¾		2000		415
			13563-3	▲	40G25/NTL 6/1	120	12	Natural Light Globe	C, CC-6	4¾		1500		320
			14016-0		40G25/W PRO	130	12	ProPack White Globe	C, CC-6	4¾		2000		420
			14015-2		40G25/CL PRO	130	12	ProPack Clear Globe	C, CC-6	4¾		2000		455
			G40	Med.	16857-5	▲	40G40/CL/LL 6/1	120	6	Clear Long Life Globe	C, C-9	6½		3000
16858-3	▲	40G40/W/LL 6/1			120	6	White Long Life Globe	C, C-9	6½		3000		335	

For the most current product information, go to the e-catalog on [www.philips.com](http://www.philips.com)  
Incandescent symbols and footnotes located on page 149



# INCANDESCENT LAMPS

## Decoratives

Watts	Bulb	Base	Product Number	Symbols, Footnotes	Ordering Code	Volts	Pkg. Qty.‡	Description	Class Filament	LCL (In.)	MOL (In.)	Rated Avg. Life (Hrs.)(93)	Approx. MBCP*	Lumens	
60	G25	Med.	16896-2	▲	60G25/CL/LL 12/1	120	12	Clear Long Life Globe	C, CC-6		4 <sup>7</sup> / <sub>16</sub>	2000		775	
			16749-4	▲	60G25/W/LL 12/1	120	12	White Long Life Globe	C, CC-6		4 <sup>7</sup> / <sub>16</sub>	2000		700	
			16899-6	▲	60G25/CL/LL 4/3	120	12	Clear Long Life Globe	C, CC-6		4 <sup>7</sup> / <sub>16</sub>	2000		775	
			16900-3	▲	60G25/W/LL 4/3	120	12	White Long Life Globe	C, CC-6		4 <sup>7</sup> / <sub>16</sub>	2000		700	
			14018-6	▲	60G25/W PRO	130	12	ProPack White Globe	C, CC-6		4 <sup>7</sup> / <sub>16</sub>	2000		715	
				14017-8		60G25/CL PRO	130	12	ProPack Clear Globe	C, CC-6		4 <sup>7</sup> / <sub>16</sub>	2000		780
		G30	Med.	16849-2	▲	60G30/W/LL 6/1	120	6	White Long Life Globe	C, C-9		5 <sup>1</sup> / <sub>2</sub>	3000		580
		G40	Med.	16851-8	▲	60G40/W/LL 6/1	120	6	White Long Life Globe	C, C-9		6 <sup>1</sup> / <sub>16</sub>	3000		595
	16852-6			▲	60G40/CL/LL 6/1	120	6	Clear Long Life Globe	C, C-9		6 <sup>1</sup> / <sub>16</sub>	3000		665	
	14077-2				60G40/W 6/1 PRO	130	6	ProPack White Globe	C, C-9		6 <sup>1</sup> / <sub>16</sub>	1500		570	
	14078-0				60G40/CL 6/1 PRO	130	6	ProPack Clear Globe	C, C-9		6 <sup>1</sup> / <sub>16</sub>	1500		610	
	100	G25	Med.	13423-9	▲	100G25/W/LL 12/1	120	12	White Long Life Globe	C, CC-6		4 <sup>7</sup> / <sub>16</sub>	2000		1180
		G30	Med.	16850-0	▲	100G30/W/LL 6/1	120	6	White Long Life Globe	C, C-9		5 <sup>1</sup> / <sub>2</sub>	3000		945
G40		Med.	16853-4	▲	100G40/W/LL 6/1	120	6	White Long Life Globe	C, C-9		6 <sup>1</sup> / <sub>16</sub>	3000		985	
			16859-1	▲	100G40/CL/LL 6/1	120	6	Clear Long Life Globe	C, C-9		6 <sup>1</sup> / <sub>16</sub>	3000		1100	

For the most current product information, go to the e-catalog on [www.philips.com](http://www.philips.com)  
Incandescent symbols and footnotes located on page 149



# INCANDESCENT LAMPS

## Tuffguard

Watts	Bulb	Base	Product Number	Symbols, Footnotes	Description	Volts	Pkg. Qty.‡	Rated Avg. Life (Hrs.)(93)	Availability
25	A19	Med.	20178-0	▲	25A/IF/TG 130V 24/2	130	24/2	2500	Made to Order
	T10	Med.	20179-8	▲	25T10/TG 120/130V 24/1	120	24	1000	Made to Order
30	R20	Med.	20181-4	▲ (87)	30R20/TG 120V 12/1	120		2000	Made to Order
40	A15	Med.	20182-2	▲	40A15/TG 120/130V 120/1	120	120	1000	Made to Order
	A19	Med.	20183-0	▲	40A/CL/TG 120/130V 48/1	120	48	1500	Made to Order
	T10	Med.	20184-8	▲	40T10/TG 120/130V 24/1	120	24	1000	Stocked
50	R20	Med.	20187-1	✕ ▲ (87)	50R20/TG 120V 12/1	120	12	2000	Made to Order
60	A19	Med.	20188-9		60A19/35/TG 120V 48/1	120	48	3500	Made to Order
			15925-1		60A/35/TG 130V 48/1	120	48	3500	Made to Order
65	BR30	Med.	20190-5	▲ (87)	65BR30/FL55/TG 120V 12/1	120	12	2000	Made to Order
	BR30	Med.	20191-3	▲ (87)	65BR30/FL55/TG 130V 12/1	130	12	2000	Made to Order
75	A19	Med.	20195-4	▲	75A/TG 120V 48/1	120	48	750	Made to Order
			15933-5	▲	75A/TG 130V 48/1	120	48	750	Stocked
	A21	Med.	20018-8	▲	75A/RH/TG 120/130V 12/1	120	12	1000	Stocked
100	A19	Med.	15934-3	▲	100A/TG 130V 48/1	130	48	750	Stocked
	A21	Med.	15927-7		100A/RS/VS/BR/TG 120/130V 60/1	120	60	1000	Stocked
	BR38	Med.	15923-6	(37, 51, 53)	100PAR/1/CL/TG 130V 12/1	130	12	2000	Stocked
	A21	Med.	20197-0	▲	100A21/TG 120/130V 120/1	120	120	750	Made to Order
20198-8			▲	100A21/99/TG 120/130V 60/1	120	60	2500	Made to Order	
120	BR40	Med.	20199-6	✕ ▲ (87)	120BR/FL60/TG 130V 24/1	130	24	2000	Stocked
			20200-2	✕ ▲ (87)	120BR/FL60/TG 120V 24/1	120	24	2000	Made to Order
125	BR40	Med.	15930-1	✕ (27, 87, 89)	125BR40/11/TG 120V 4/1	120	4	5000	Stocked
150	A21	Med.	15931-9		150A/35/RS/BR/TG 120/130V 60/1	120	60	3500	Stocked
	BR38	Med.	20203-6	✕ (37, 51, 53)	150BR38/FL/TG 130V 6/1	130	6	2000	Stocked

For the most current product information, go to the e-catalog on [www.philips.com](http://www.philips.com)  
Incandescent symbols and footnotes located on page 149



# INCANDESCENT LAMPS

## Tuffguard

Watts	Bulb	Base	Product Number	Symbols, Footnotes	Description	Volts	Pkg. Qty.‡	Rated Avg. Life (Hrs.)(93)	Availability
200	A23	Med.	20204-4	▲	200A/99/TG A23 120/130 60/1	120	60	2500	Made to Order
	PS30	Med.	20472-7	▲	200PS30/RS/IF/TG 200	120–130	60	1000	Made to Order
250	R40	Med.	15932-7	(27, 87, 89)	250R40/HR/TG 120V 4/1	120	4	5000	Stocked
	BR40	Med.	20205-1	(27, 87)	250BR40/1/TG 120V 4/1	120	4	5000	Stocked
300	PS25	Med.	20206-9	▲	300M/99/IF PS25 120V 60/1	120	60	2500	Made to Order
	PS30	Med.	20207-7	▲	300M/PS30/IF/TG 120/130V 60/1	120	60	750	Stocked
	PS35	Mog.	20474-3	▲	300/IF/TG	120–130	12	1000	Made to Order

For the most current product information, go to the e-catalog on [www.philips.com](http://www.philips.com)  
Incandescent symbols and footnotes located on page 149

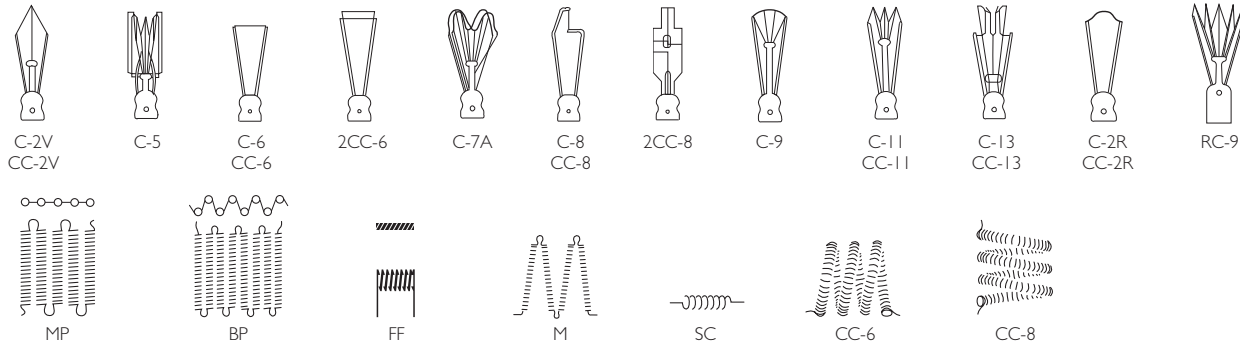


# INCANDESCENT LAMPS

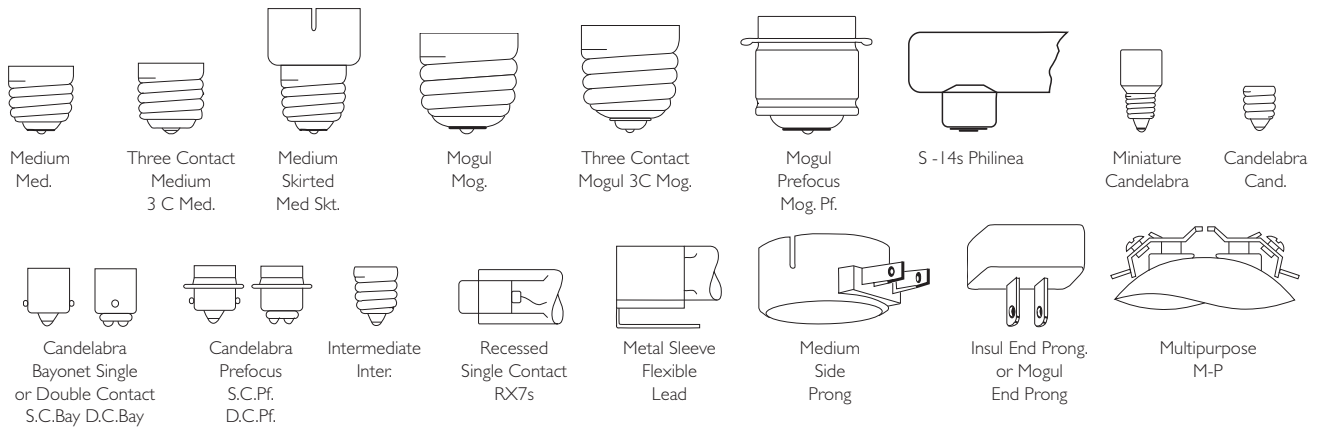
## Filament Designations, Base Types and Bulb Shapes

### Filament Designations (Not Actual Sizes)

Filament designations consist of a letter or letters to indicate how the wire is coiled and an arbitrary number sometimes followed by a letter to indicate the arrangement of the filament on the supports. Prefix letters include C (coil)—wire is wound into a helical coil or it may be deeply fluted; CC (coiled coil)—wire is wound into a helical coil and this coiled wire again wound into a helical coil. Some of the more commonly used types of filament arrangements are illustrated.

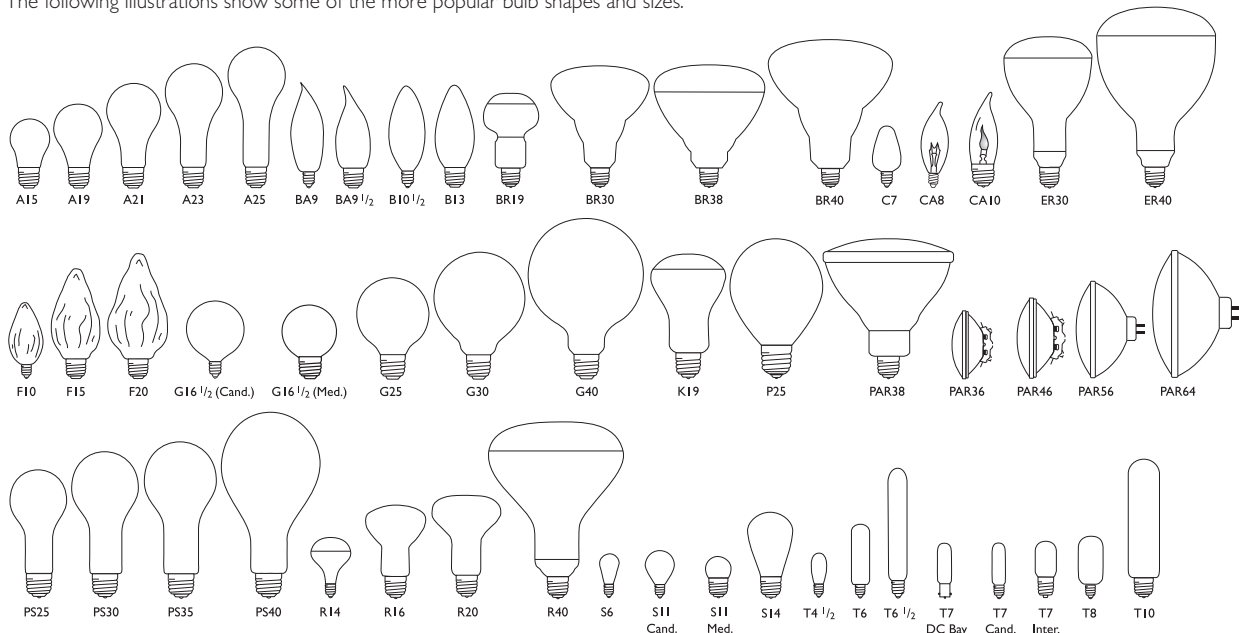


### Base Types (Not Actual Sizes)



### Bulb Shapes (Not Actual Sizes)

The size and shape of a bulb is designated by a letter or letters followed by a number. The letter indicates the shape of the bulb while the number indicates the diameter of the bulb in eighths of an inch. For example, "T10" indicates a tubular shaped bulb having a diameter of 5/8 or 1 1/4 inches. The following illustrations show some of the more popular bulb shapes and sizes.



# INCANDESCENT LAMPS

For the most current product information, go to the e-catalog on [www.philips.com](http://www.philips.com)

- Exclusive to Philips Lighting Company
- Nickel plated brass base
- § Energy Saving Product
- ▲ Aluminum base
- ★ Heat resisting glass bulb
- ◆ Maximum Beam Candlepower
- ✕ Orders will be shipped until inventory is depleted; no longer manufactured
- © This Bulb Meets US Federal Minimum Efficiency Standard
- † New since last printing
- \* Two Lamp Carded Pack.
- ‡ Quantity shown is minimum shipping container—refer to Net Price Schedule for number of lamps to qualify as a standard case.
- ✓ Consider the compact fluorescent lamps listed on pages 52–69 or the energy saving halogen listed on pages 102–105 for energy savings
- G = General Lighting
- S = Street Lighting
- ▼ PAR38 (one piece)
- + Pursuant to California law, these incandescent lamps cannot be used or offered for sale for use in traffic signals in the State of California.
- ++ Pursuant to California law, these incandescent lamps cannot be used or offered for sale in the State of California.

- (4) Average laboratory life is 200 hours for vacuum cleaner and 600 hours for sewing machine service. Design life 1000 hours.
  - (8) Operate base down.
  - (9) This lamp should be shielded from moisture to prevent breakage.
  - (10) Operating position—horizontal.
  - (12) Operate base down to horizontal.
  - (14) Operate base up.
  - (18) Base is medium left hand thread.
  - (19) May not give satisfactory performance if any accessory equipment is attached to or touches the glass bulb.
  - (22) Unsatisfactory lamp operation is likely to occur in operating positions between horizontal and base up, particularly between 45° from base up and base up.
  - (27) Average laboratory life in excess of 5000 hours. In-service life depends upon service conditions.
  - (29) Suitable for indoor and outdoor service.
  - (31) Operate only in porcelain sockets.
  - (37) Should not be used in equipment where the base temperature will exceed 500°F.
  - (43) Unless otherwise noted, may be operated in any position, but lumen maintenance is best when operated vertically base up.
  - (46) Stippled, rounded cover.
  - (51) Light output is maintained best when operated within 45° of vertically base up.
  - (53) The bulb, though made of heat-resistant glass, may break if moisture falls on it. Not recommended for use in enclosed, close-fitting housings.
  - (55) For use only with heat resistant connector and with lamp supported by bulb rim.
  - (59) Life dependent upon service conditions.
  - (63) Design volts 145.
  - (64) For use only in equipment specially designed to maintain bulb and base temperature within safe limits.
  - (66) Silicone Coating reduces lumen output from Standard Values less than 3%.
  - (82) **CAUTION:** To avoid deterioration of lampholder by heat, use only heat resistant lampholders or fixtures listed by a nationally recognized electrical testing organization for use with reflector or PAR lamps.
  - (87) Do not allow hot bulb to come in contact with liquid or metal parts of the fixture, as glass may shatter. Do not use outdoors. Do not operate in close proximity to flammable materials or those adversely affected by heat or drying. Operate only in heat resistant sockets.
  - (89) **CAUTION:** Do not operate in close proximity to flammable materials or those adversely affected by heat or drying. Operate only in heat resistant sockets.
- WARNING:** Use carefully. May cause serious burns. Do not use over insensitive skin areas or in the presence of poor circulation. The unattended use of infrared heat by children or incapacitated persons may be dangerous.
- Lamp should not be placed closer than 18" to the surface being irradiated.
  - Do not use for therapeutic or topical applications unless recommended by a physician.
  - For food warming, use only lamps with heat resisting glass.
- (90) Since there is considerable heat radiation in the beam of this lamp, care should be taken against using it without suitable protection, in close proximity to combustible materials or those adversely affected by drying action.
  - (93) Rated average life is the length of operation (in hours) at which point an average of 50% of the lamps will still be operational and 50% will not.
  - (94) To prevent electrical shock, match wide blade of plug to wide slot of outlet, fully insert. Do not cover night light; overheating may occur. Do not plug in near radiator or source of heat.

**WARNING:** For indoor use only.